



ALEWIFE BROOK  
WEST BANK GREENWAY

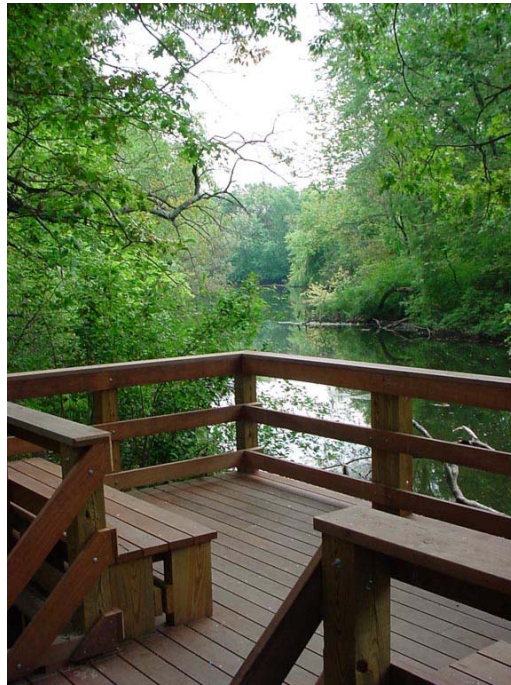
dcr 

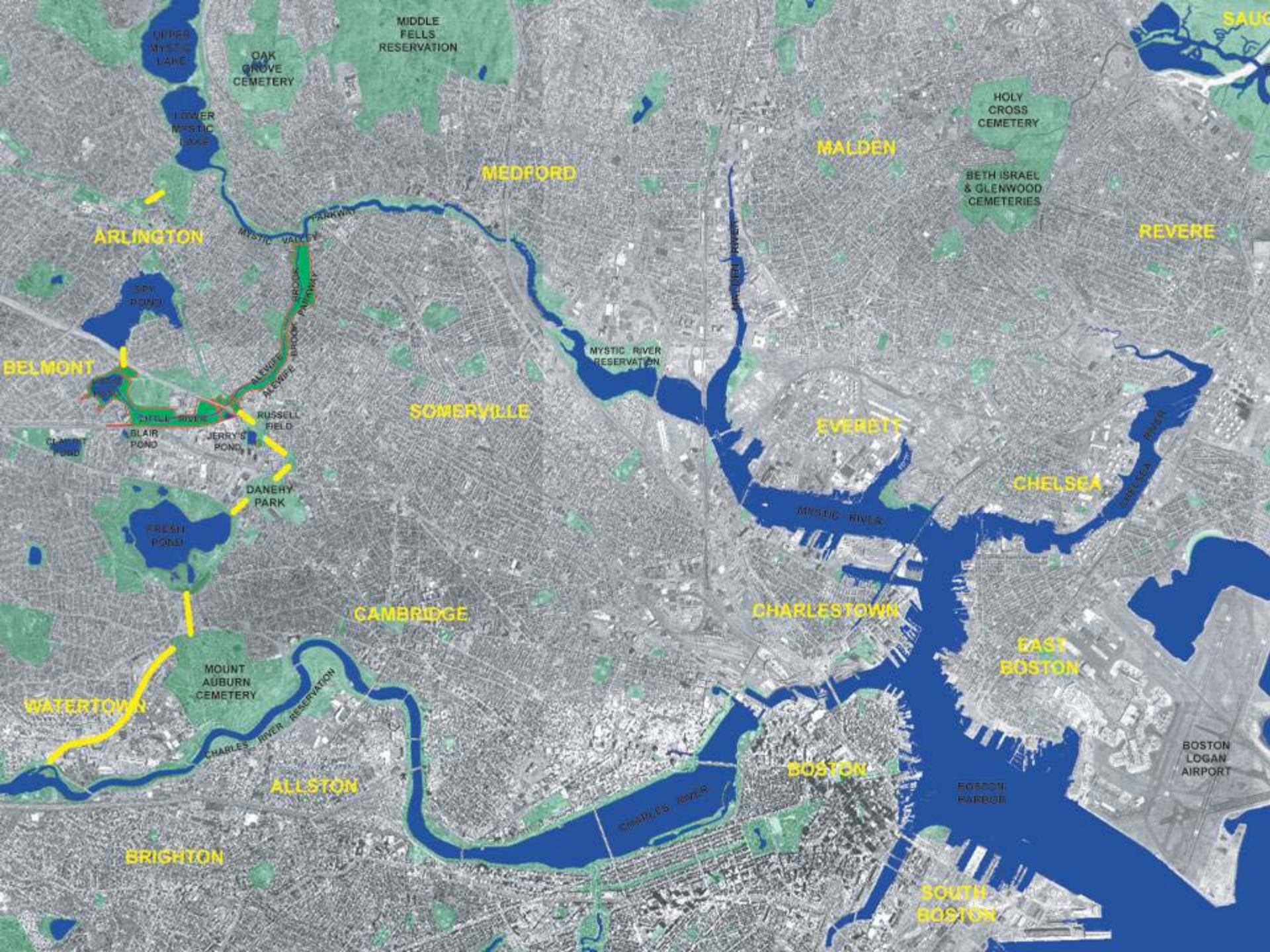
*department of* Conservation and Recreation

Building Sustainable Communities on an Ecological Foundation  
 **Bioengineering**  
GROUP

**C R J : A**  
CAROL R JOHNSON ASSOCIATES INC

# Reconnect People and the Park to the Brook





UPPER MYSTIC LAKE

OAK GROVE CEMETERY

MIDDLE FELLS RESERVATION

LOWER MYSTIC LAKE

ARLINGTON

MEDFORD

MALDEN

HOLY CROSS CEMETERY

BETH ISRAEL & GLENWOOD CEMETERIES

REVERE

BELMONT

MYSTIC RIVER RESERVATION

SOMERVILLE

EVERETT

CHELSEA

CLARET POND

BLAIR POND

JERRY'S POND

DANEHY PARK

FRESH POND

CAMBRIDGE

CHARLESTOWN

EAST BOSTON

WATERTOWN

MOUNT AUBURN CEMETERY

ALLSTON

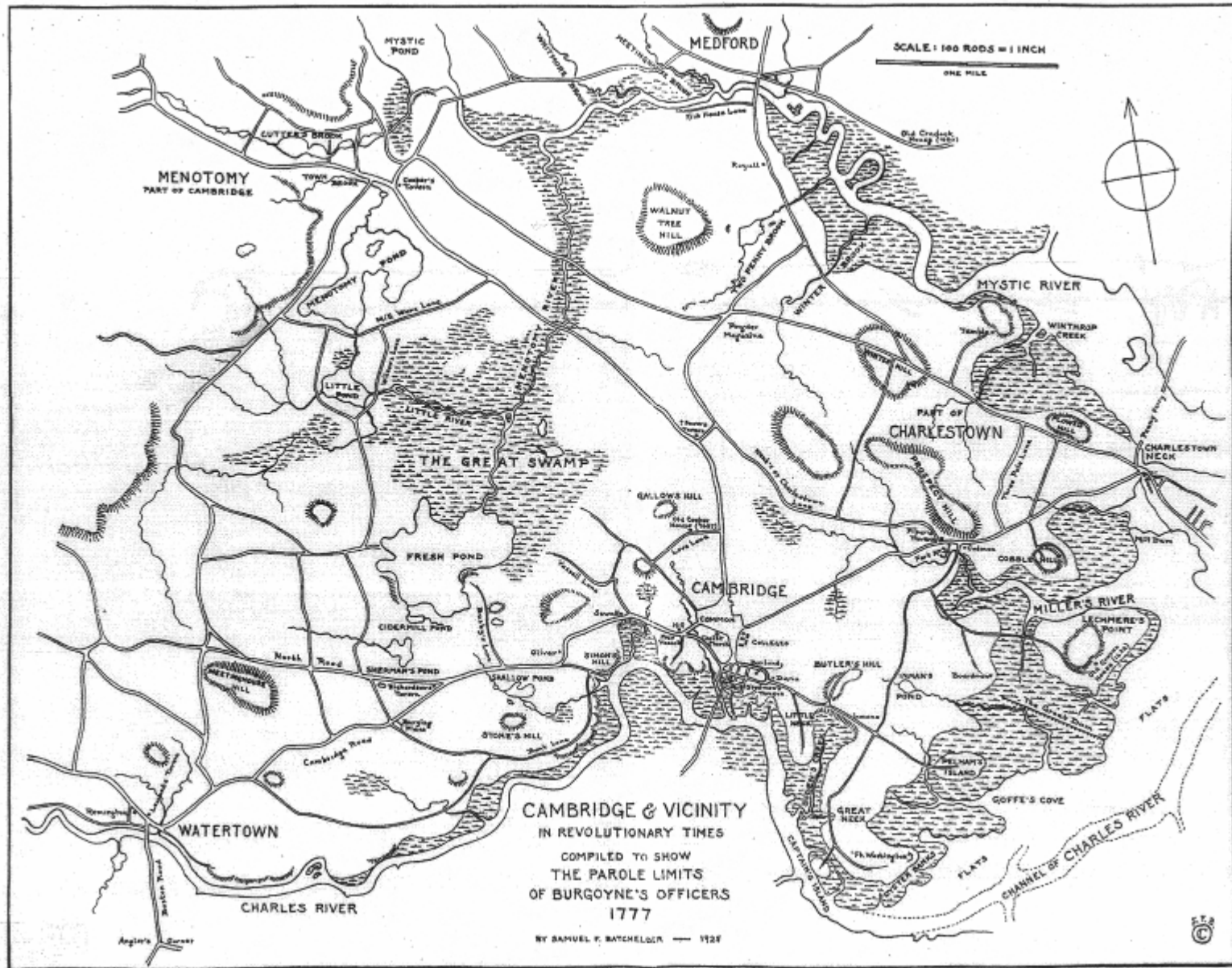
BOSTON

BOSTON LOGAN AIRPORT

BRIGHTON

SOUTH BOSTON





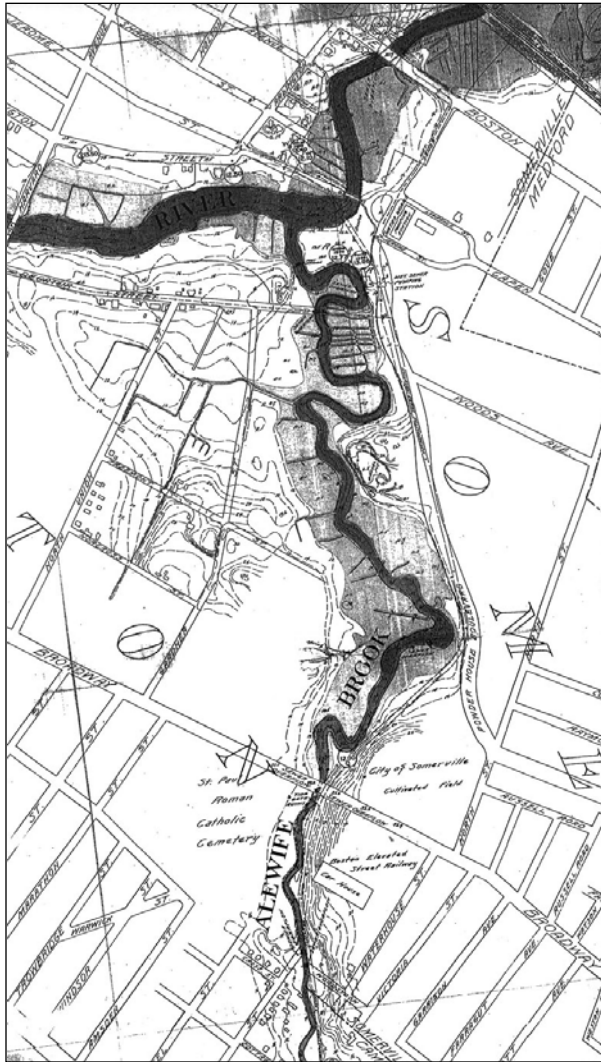
**CAMBRIDGE & VICINITY**  
 IN REVOLUTIONARY TIMES  
 COMPILED TO SHOW  
 THE PAROLE LIMITS  
 OF BURGOYNE'S OFFICERS  
 1777

BY SAMUEL P. BATCHELDER — 1926

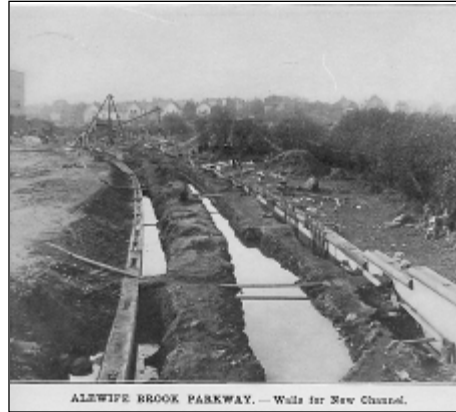


## Charles Eliot and The Olmsted Brothers





1904



ALEWIFE BROOK PARKWAY. — Walls for New Channel.



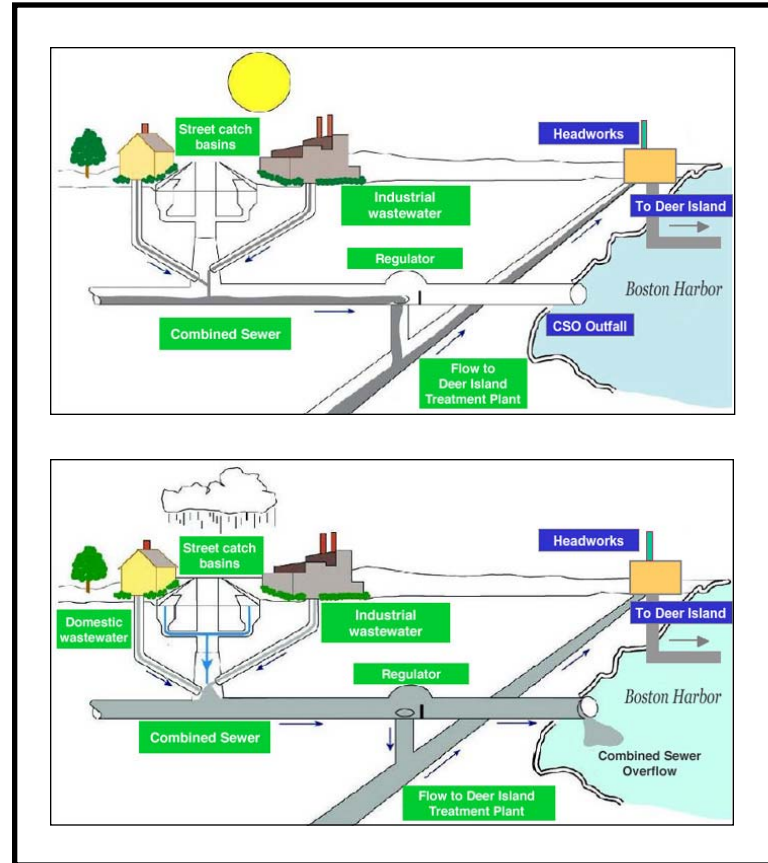
ALEWIFE BROOK PARKWAY. — Digging New Channel.

1911



2006

# Challenges





Scientists generally agree that stream degradation consistently occurs at relatively low levels of imperviousness (10 to 20%)

To put this in perspective...

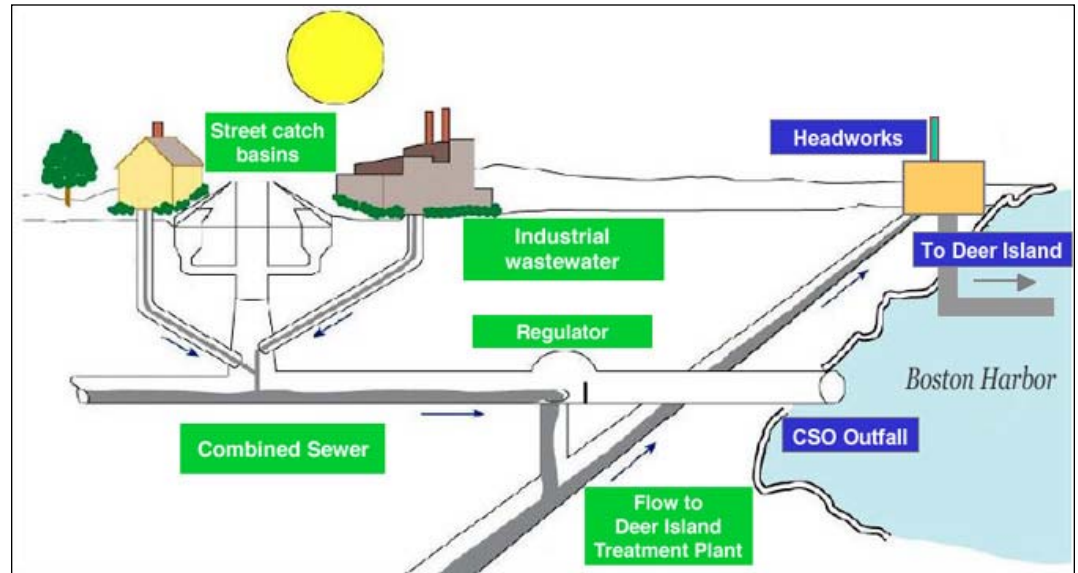
Typical total imperviousness in medium-density, single-family home residential areas range from

**25** percent to nearly **60** percent



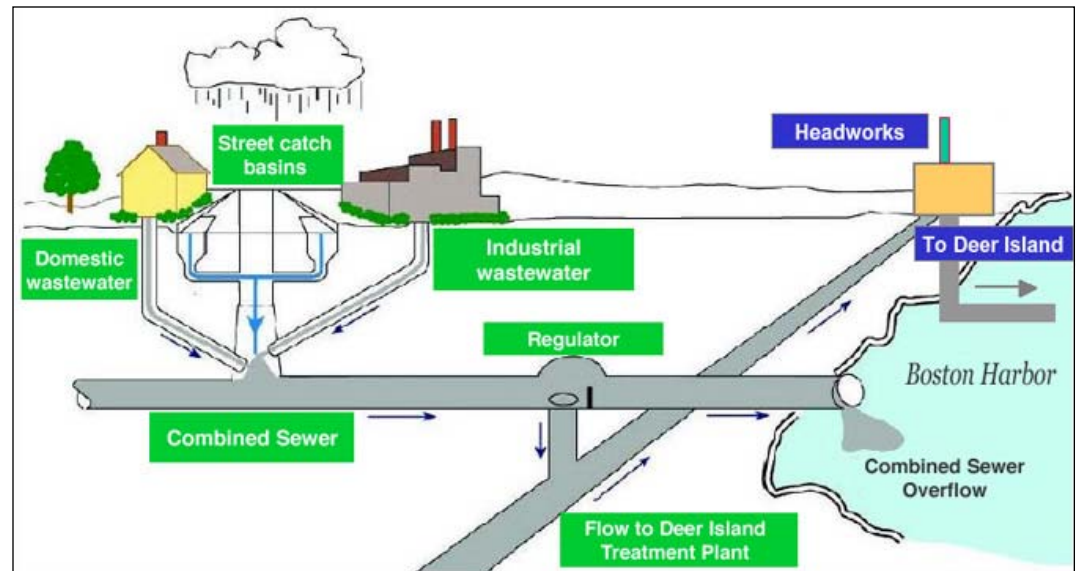
## Dry Weather

During dry weather, CSOs do not discharge into bodies of water. Their flows are carried to treatment facilities.



## Heavy Rains

In heavy rainstorms, CSOs act as relief points for the sewer system. They discharge into the nearest body of water in order to prevent sewage backups into homes and onto streets.





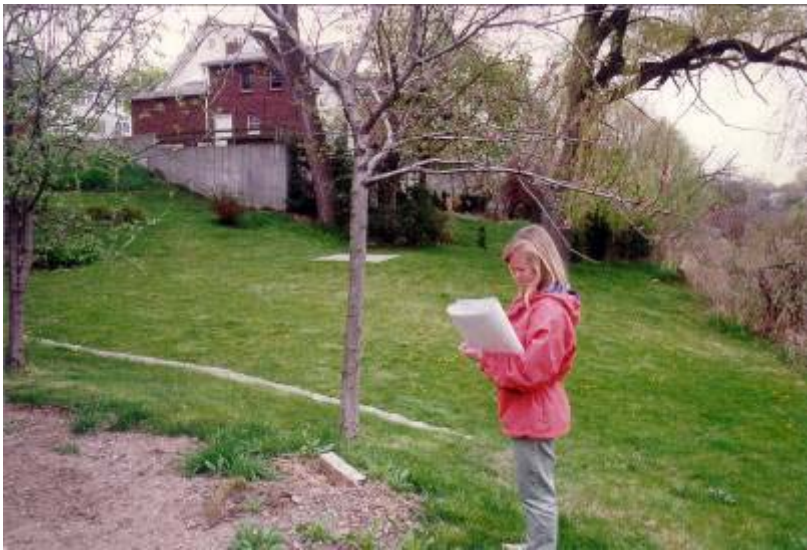
*department of Conservation and Recreation*

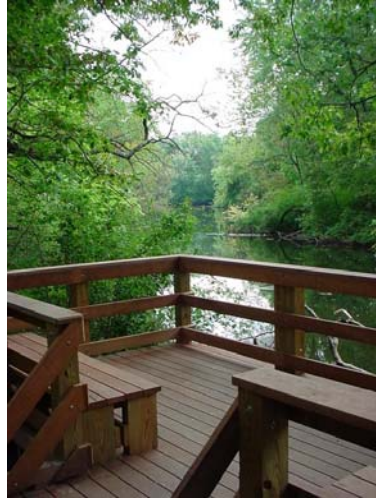
The DCR's mission:

To protect, promote and enhance  
our common wealth of natural,  
cultural and recreational resources  
for the well being of all.

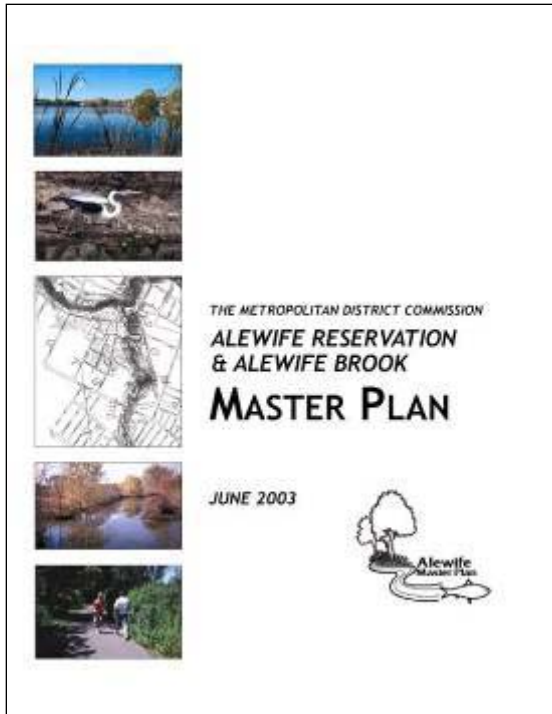


# Upper Charles River Greenway

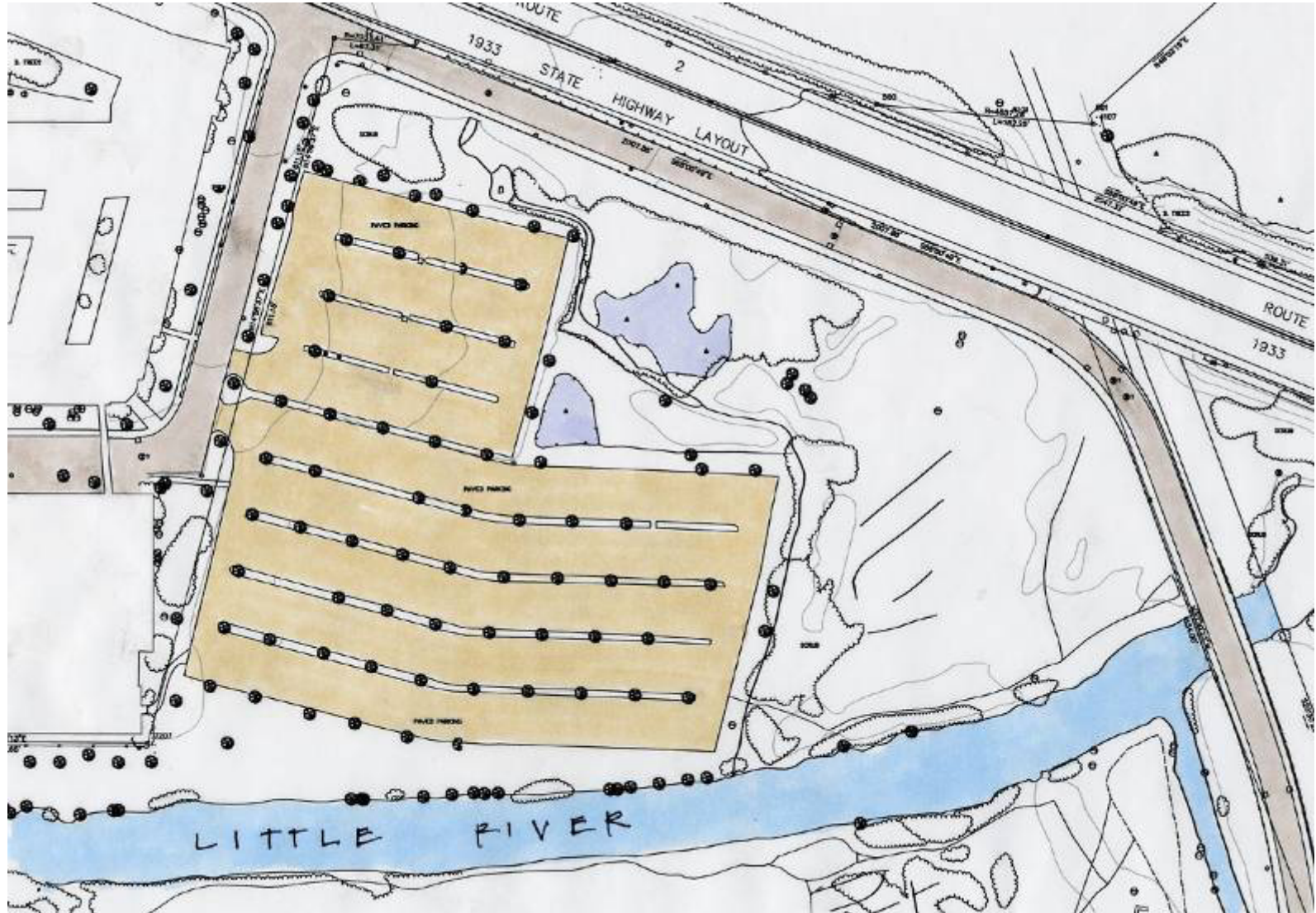








# Historic Parking Lot Restoration within Alewife Reservation







# PROJECT GOALS



# PROJECT GOALS:

## Reconnect People and the Park to the Brook

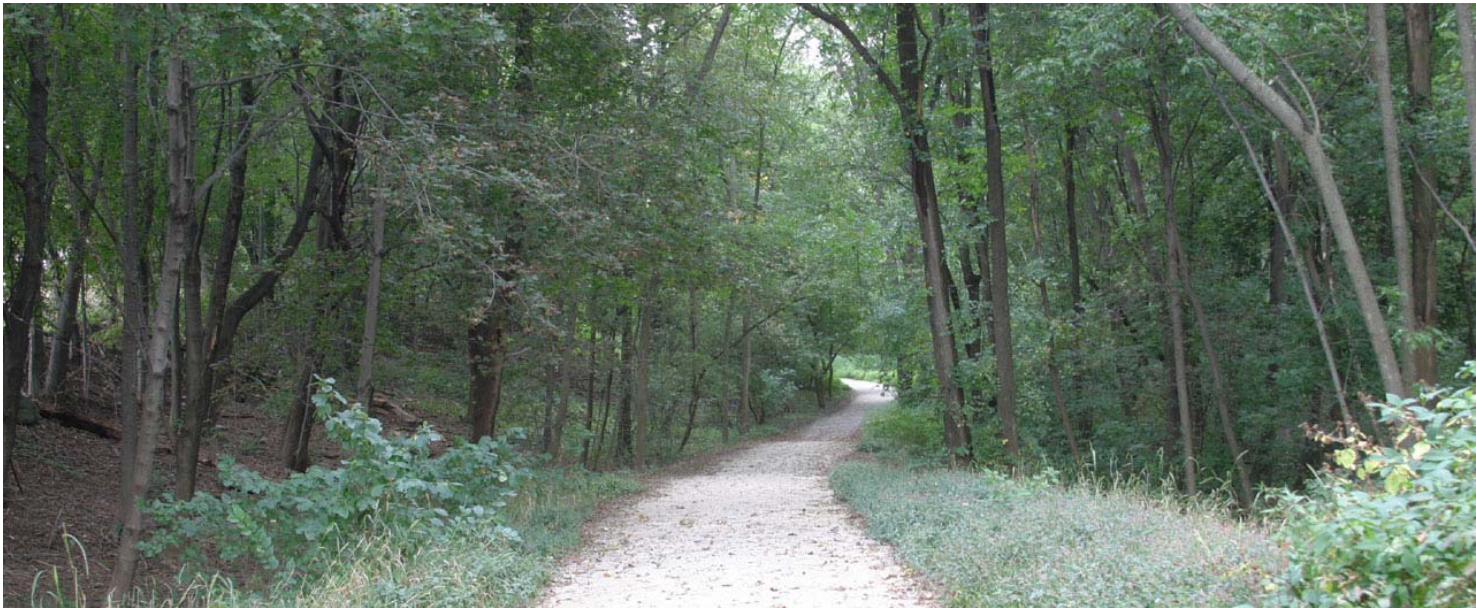


1. Enhance and Expand Recreational Access
2. Protect and Enhance Wildlife Habitat
3. Improve Water Quality
4. Design for Cost Effective Maintenance
5. Reclaim Encroachments
6. Promote Education and Interpretation
7. Design for Public Safety



# 1. Enhance and Expand Recreational Access

Improve public and universal access to the brook with trails...



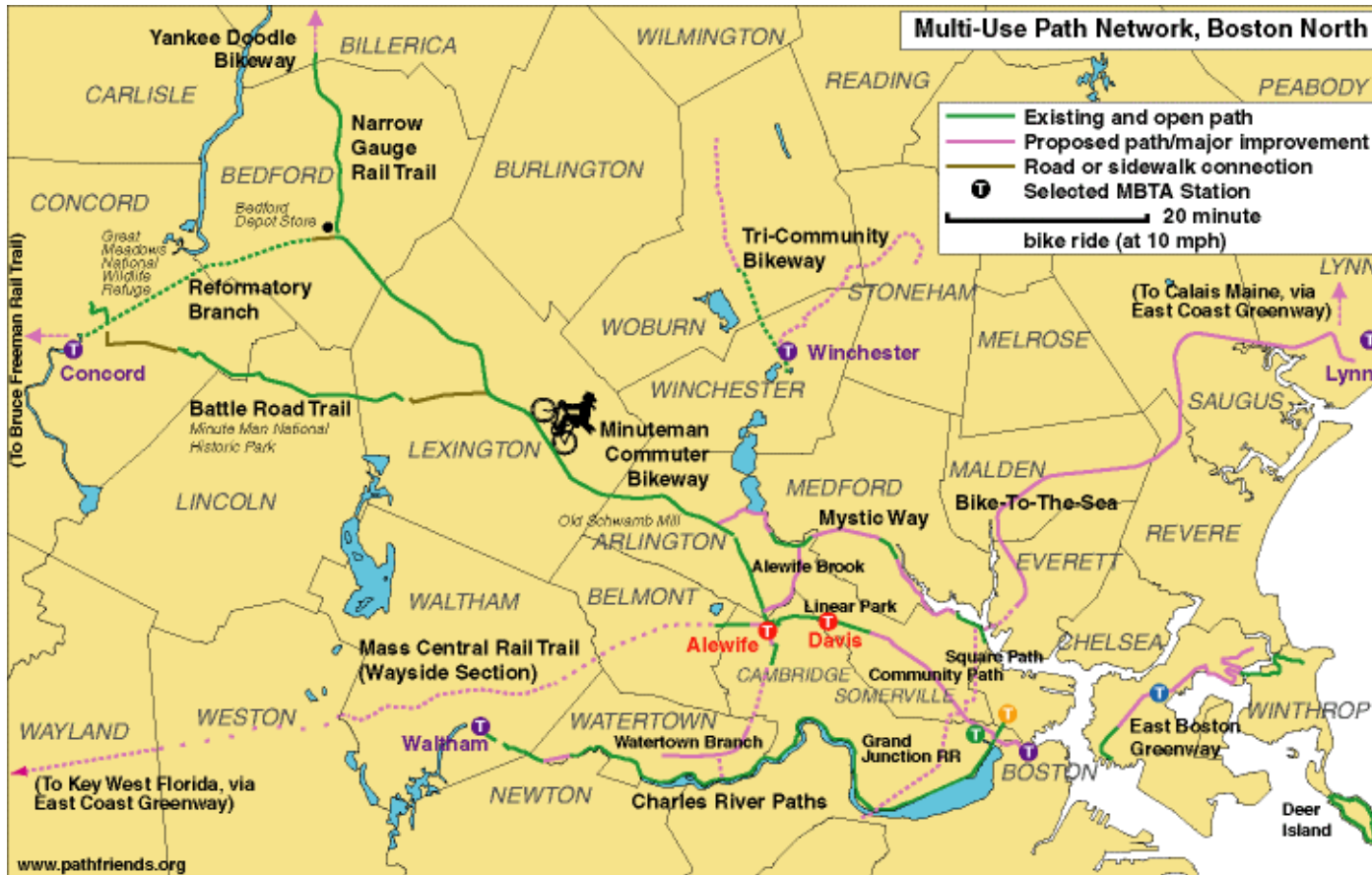
# 1. Enhance and Expand Recreational Access

... and viewing platforms



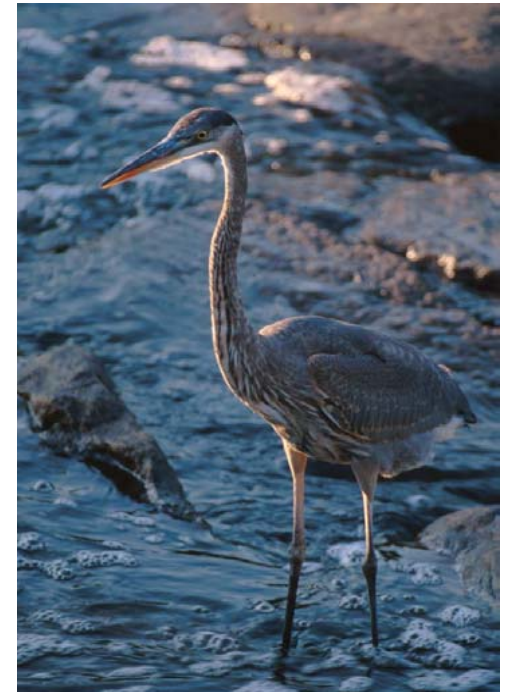
# 1. Enhance and Expand Recreational Access

Provide linkages with adjacent trails to enhance the regional trail network



# 1. Enhance and Expand Recreational Access

Install wayfinding and trail logos consistent with DCR's signage program



## 2. Protect and Enhance Wildlife Habitat

- Create Meadow Habitat
- Open Tree Canopy
- Remove Invasive Species



### 3. Improve Water Quality

Stormwater Infiltration Gardens provide infiltration, evapotranspiration, detention & water quality treatment of stormwater





## 4. Design for Cost Effective Maintenance

- Routine maintenance
- Invasive species control
- Maintenance strategies
  - Lawn treatment
  - Meadow treatment
  - Woodland treatment
  - Raingardens



## 5. Reclaim Encroachments



## 6. Promote Education and Interpretation



## 7. Design for Public Safety

The brook and its banks have been fenced off and have become densely vegetated with trees, shrubs and invasives that limit access to the brook.

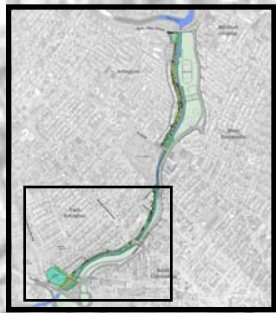


# THE PLAN





# East Arlington



Turf  
Landscape Zone

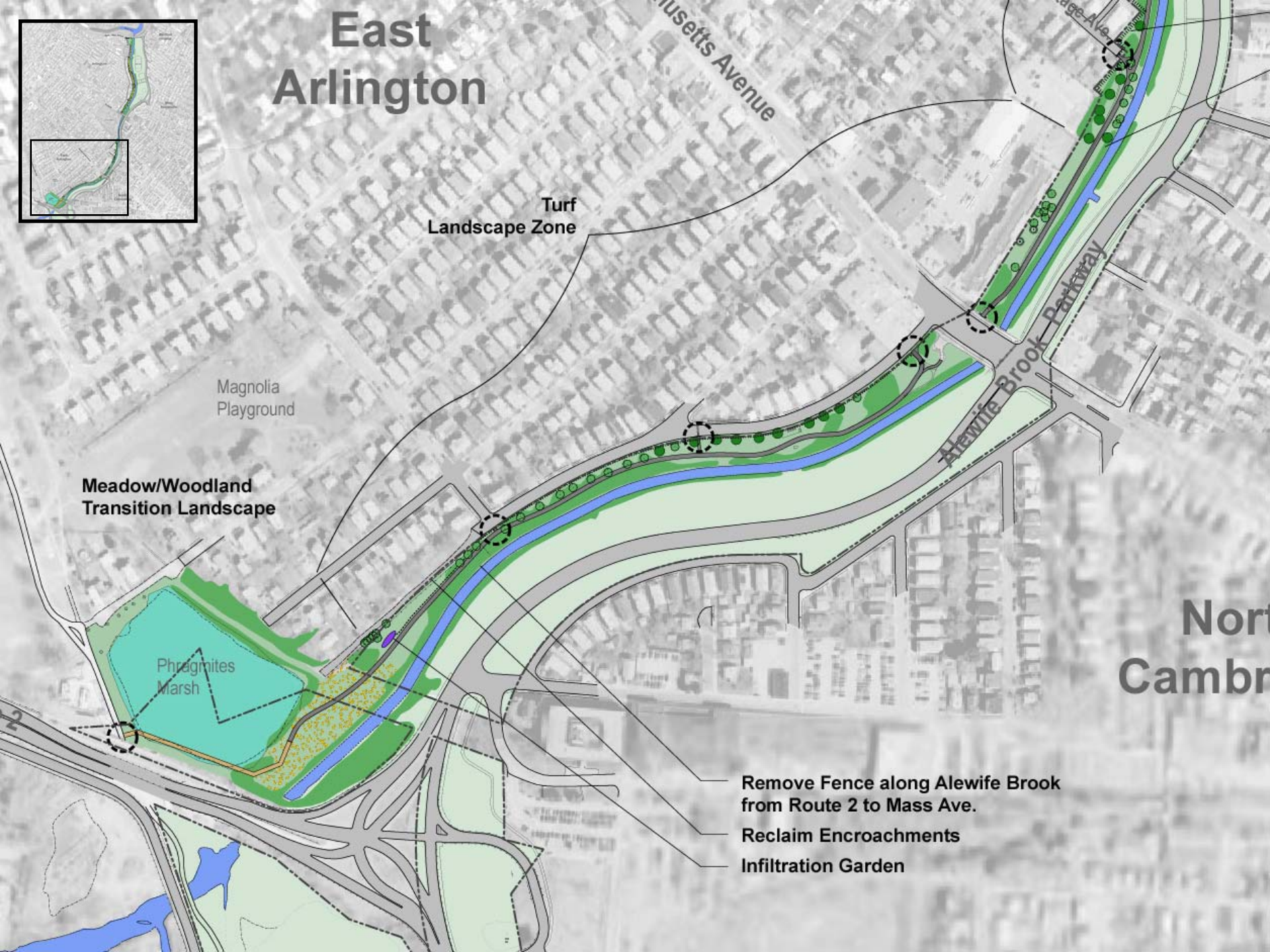
Magnolia  
Playground

Meadow/Woodland  
Transition Landscape

Phragmites  
Marsh

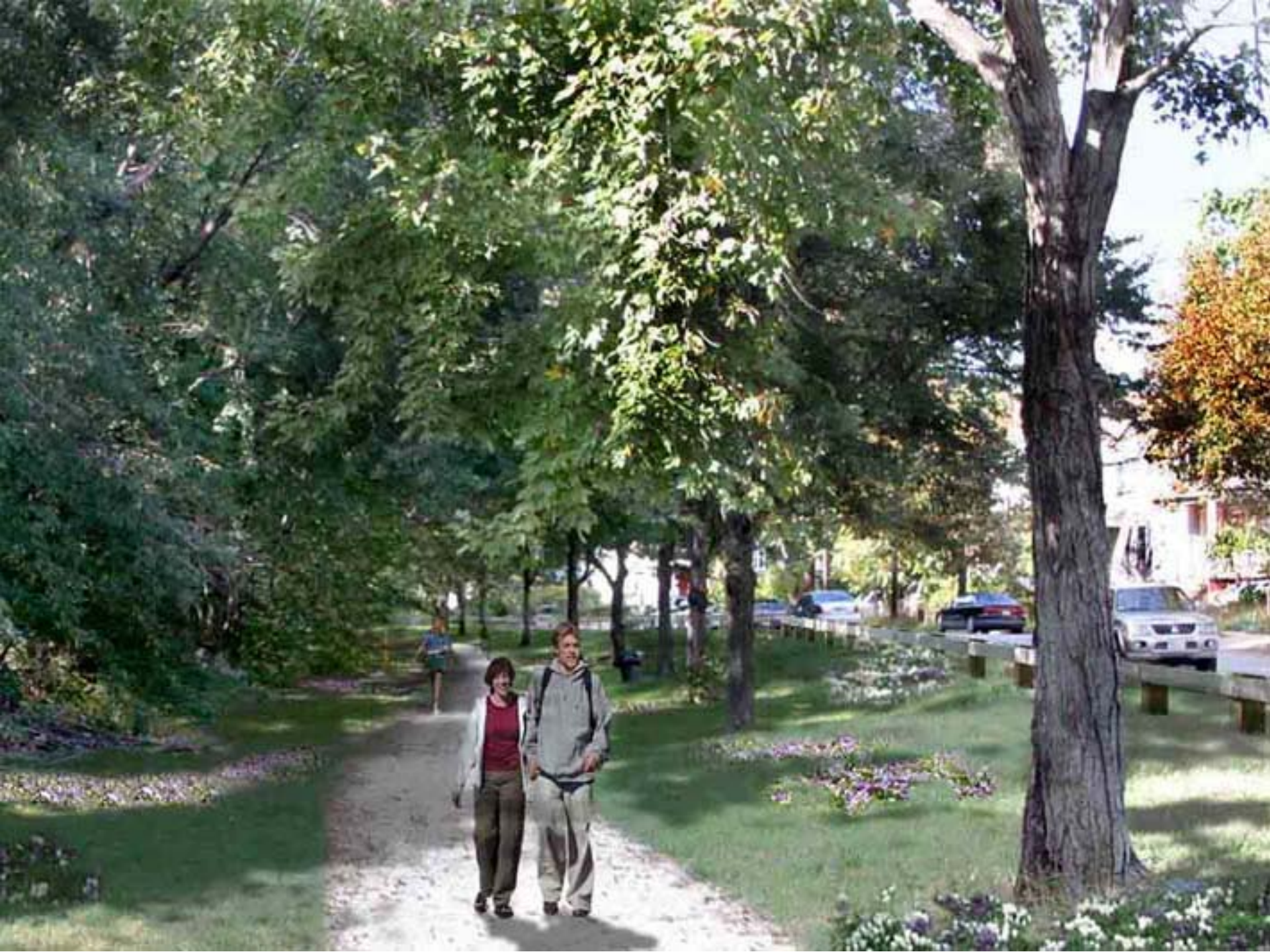
- Remove Fence along Alewife Brook from Route 2 to Mass Ave.
- Reclaim Encroachments
- Infiltration Garden

North  
Cambridge

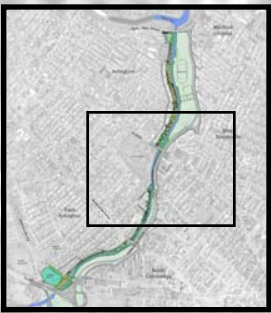








# West Somerv



Woodland  
Landscape Zone

Broadway

St. Paul's Cemetery

ADA Accessible Boardwalk Ramp

In-Ground Trail Markers

Repair Existing Fence

Repair Existing Sidewalk

Elevated Boardwalk

Woodland  
Landscape Zone

Henderson St.

Cottage Ave.

ADA Accessible Boardwalk Ramp

Reclaim Encroachments

Remove Fence along Alewife Brook  
from Mass Ave. to Henderson St.

Massachusetts Avenue









Mystic Valley Parkway

Medford Hillside

Meadow/Woodland Transition Landscape

Reclaim Encroachments

Infiltration Gardens

Remove Fence along Alewife Brook from Broadway to Mystic Valley Parkway

Shoreline Repair

Arlington

Dilboy Field

Meadow Landscape Zone

Overlook

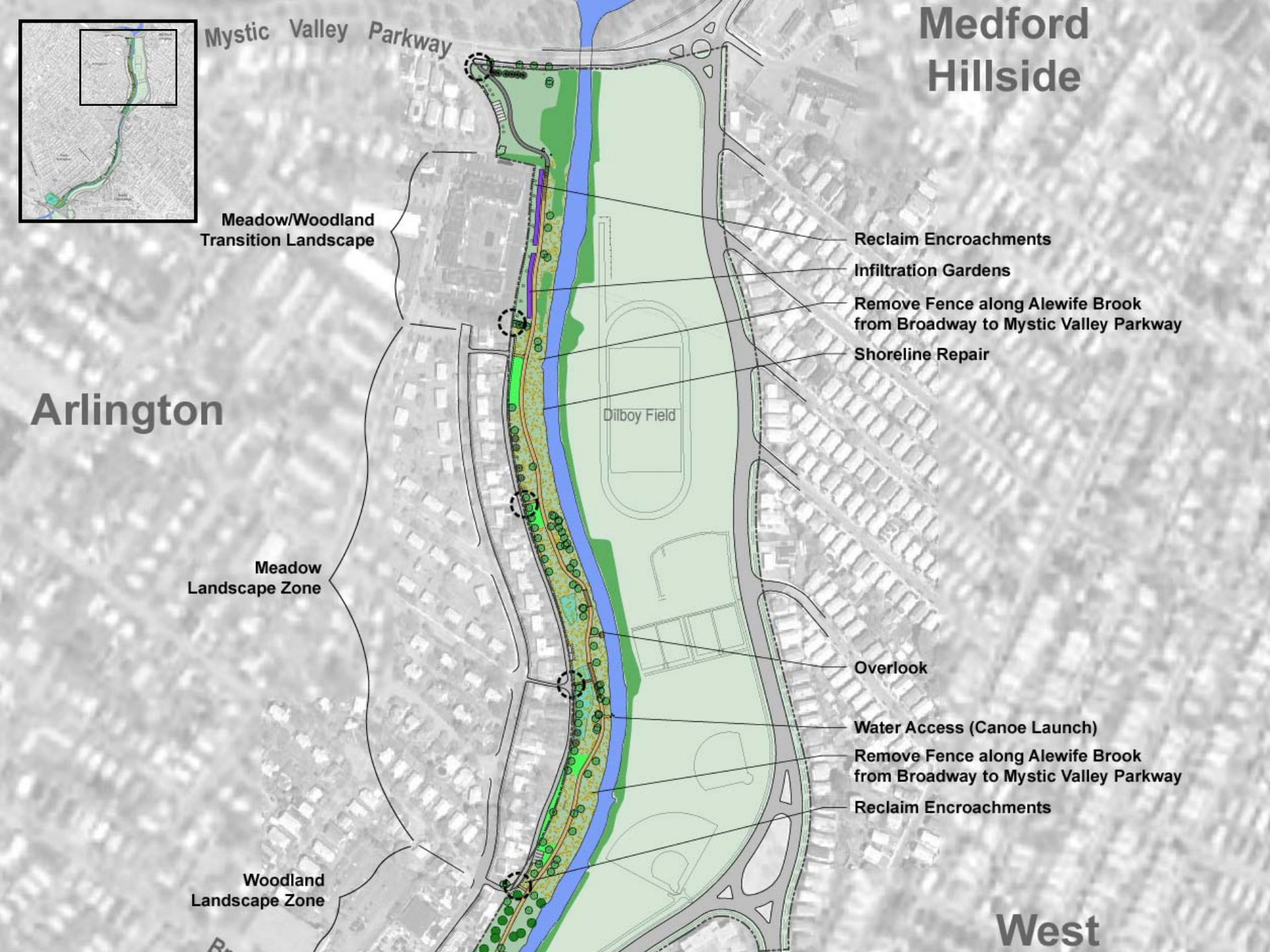
Water Access (Canoe Launch)

Remove Fence along Alewife Brook from Broadway to Mystic Valley Parkway

Reclaim Encroachments

Woodland Landscape Zone

West









Medford Hillside

Arlington

West Somerville

East Arlington

North Cambridge

Mystic River

Mystic Valley Parkway

Broadway

St. Paul's Cemetery

Massachusetts Avenue

Huntington Blvd

Tremble Playing Fields

Route 1

Milton Park

Magnolia Playground

Franklin Park

Cambridge



# Questions and Comments

