



NOTE:
 1. SEE SHEET CG-1 FOR
 SURVEY LEGEND



100% DESIGN
 DRAFT SUBMITTAL
 05-NOV-2004

SEA S E A Consultants Inc.
 Science/Engineering/Architecture
 CAMBRIDGE, MASSACHUSETTS
 CONCORD, NEW HAMPSHIRE
 ROOY HILL, CONNECTICUT



THE BIOENGINEERING GROUP, INC.
 18 Commercial St.
 Salem, MA 01970
 978-740-0096 fax
 www.thebioengineering.com

| | |
|-------------|----------|
| Scale | 1"=60' |
| Date | 11.05.04 |
| Job No. | CAM |
| Designed by | KJG |
| Drawn by | KJG |
| Checked by | |
| Approved by | |

| | | |
|-----|-------------|------|
| No. | Description | Date |
| | REVISIONS | |



CITY OF CAMBRIDGE, MASSACHUSETTS
 CAMBRIDGE PARK DRIVE DRAINAGE IMPROVEMENTS
 CONTRACT NO. 12
 EXISTING CONDITIONS

Sheet No.
EC-1
 File No.

LEGEND

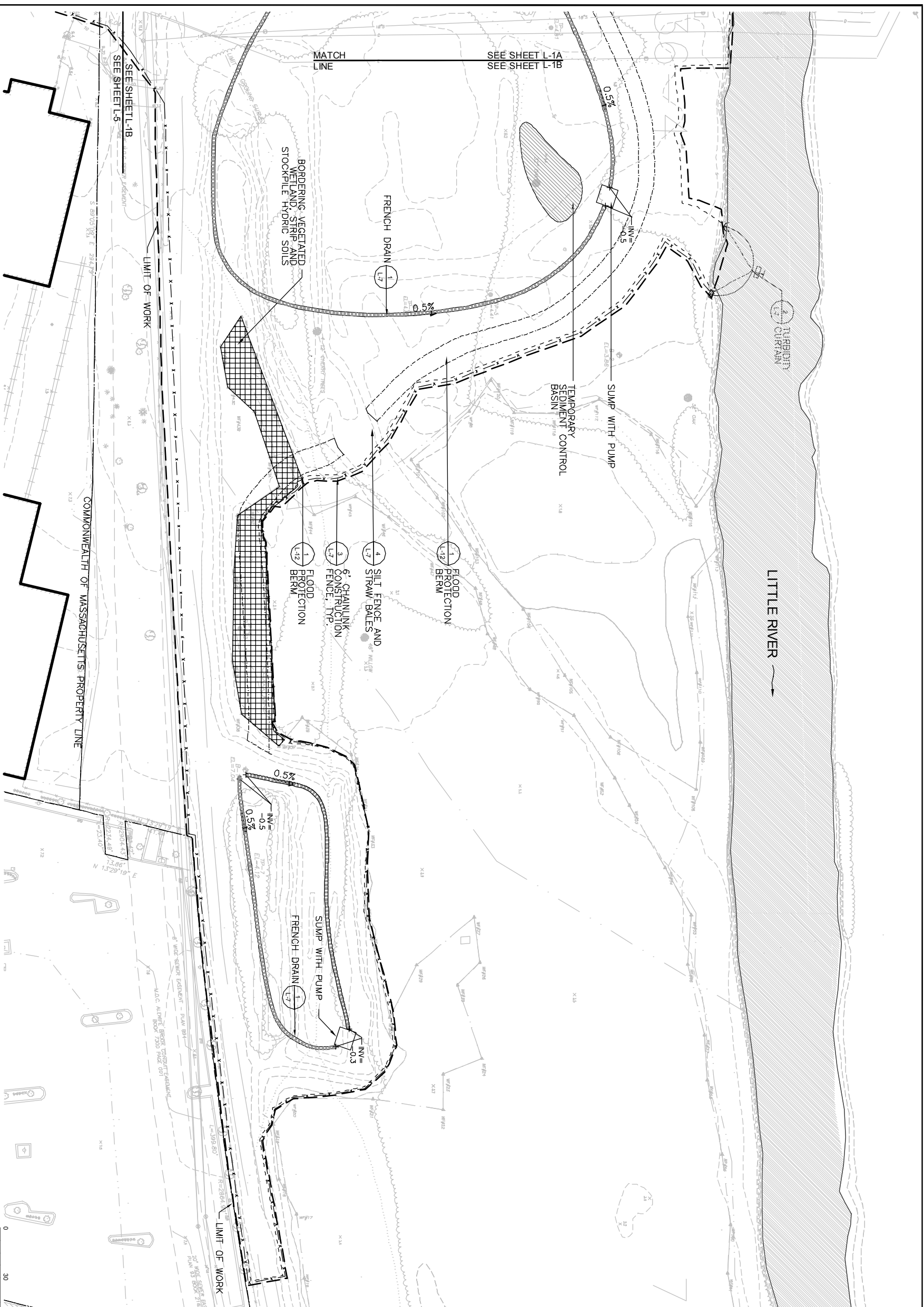
- PROPERTY LINE
- DIRECTION OF FLOW (LITTLE RIV)
- - - - - LIMIT OF WORK
- · - · - CHAIN LINK CONSTRUCTION FENCE
- · - · - JERSEY BARRIERS WITH CHAIN LINK CONSTRUCTION FENCE
- - - - - STRAW BALES AND SILT FENCE
- ▬▬▬▬▬▬▬ TEMPORARY FRENCH DRAIN
- - - - - FLOOD PROTECTION BERM
- ▬▬▬▬▬▬▬ STRIP EXISTING HYDRIC SOIL
- SUMP WITH PUMP
- TEMPORARY SEDIMENT CONTROL BASIN
- ▨ TRUCK WASHING AREA
- ⌒ TURBIDITY CURTAIN
- ▨ OPEN WATER

NOTE:
1. FOR GENERAL SEDIMENTATION AND EROSION CONTROL NOTES, SEE L-0



100% DESIGN
DRAFT SUBMITTAL
05-NOV-2004

| | | | | | | | | | | | | | | | | |
|---|--|--|------|----------|---------|-----|-------------|-----|----------|-----|------------|-----|-------------|-----------|---|---|
| <p>SEA Consultants Inc. Schwartz Engineering/Architecture CAMBRIDGE, MASSACHUSETTS CONCORD, NEW HAMPSHIRE</p> | <p>MWH BOSTON MASSACHUSETTS</p> | <p>THE BIOENGINEERING GROUP, INC. 18 Commercial St. Salem, MA 01970</p> | | | | | | | | | | | | | | |
| <table border="1" style="width: 100%; border-collapse: collapse;"> <tr> <td>Scale</td> <td>1"=30'</td> </tr> <tr> <td>Date</td> <td>11/05/04</td> </tr> <tr> <td>Job No.</td> <td>CAM</td> </tr> <tr> <td>Designed by</td> <td>KJG</td> </tr> <tr> <td>Drawn by</td> <td>KJG</td> </tr> <tr> <td>Checked by</td> <td>No.</td> </tr> <tr> <td>Approved by</td> <td>REVISIONS</td> </tr> </table> | Scale | 1"=30' | Date | 11/05/04 | Job No. | CAM | Designed by | KJG | Drawn by | KJG | Checked by | No. | Approved by | REVISIONS | <p>THE WORKS CAMBRIDGE OFFICE 100 STATE STREET CAMBRIDGE, MA 02142</p> | <p>CITY OF CAMBRIDGE, MASSACHUSETTS CAMBRIDGE PARK DRIVE DRAINAGE IMPROVEMENTS CONTRACT NO. 12 SEDIMENTATION AND EROSION CONTROL PLAN: WEST</p> |
| Scale | 1"=30' | | | | | | | | | | | | | | | |
| Date | 11/05/04 | | | | | | | | | | | | | | | |
| Job No. | CAM | | | | | | | | | | | | | | | |
| Designed by | KJG | | | | | | | | | | | | | | | |
| Drawn by | KJG | | | | | | | | | | | | | | | |
| Checked by | No. | | | | | | | | | | | | | | | |
| Approved by | REVISIONS | | | | | | | | | | | | | | | |
| <p>Sheet No. L-1A</p> | | <p>File No.</p> | | | | | | | | | | | | | | |



LEGEND

- — — — — PROPERTY LINE
- DIRECTION OF FLOW (LITTLE RIVER)
- - - - - LIMIT OF WORK
- x - x - CHAIN LINK CONSTRUCTION FENCE
- · - · - JERSEY BARRIERS WITH CHAIN LINK CONSTRUCTION FENCE
- - - - - STRAW BALES AND SILT FENCE
- ▬▬▬▬▬▬▬ TEMPORARY FRENCH DRAIN
- - - - - FLOOD PROTECTION BERM
- ▬▬▬▬▬▬▬ STRIP EXISTING HYDRIC SOIL
- SUMP WITH PUMP
- ◊ TEMPORARY SEDIMENT CONTROL BASIN
- ▬▬▬▬ TRUCK WASHING AREA
- ◡ TURBIDITY CURTAIN
- ▨ OPEN WATER

NOTE:
1. FOR GENERAL SEDIMENTATION AND EROSION CONTROL NOTES, SEE L-0



100% DESIGN
DRAFT SUBMITTAL
05-NOV-2004

SEA S E A Consultants Inc.
Schaub Engineering/Architecture
CAMBRIDGE, MASSACHUSETTS
CONCORD, NEW HAMPSHIRE
ROCKY HILL, CONNECTICUT

MWH
BOSTON
MASSACHUSETTS

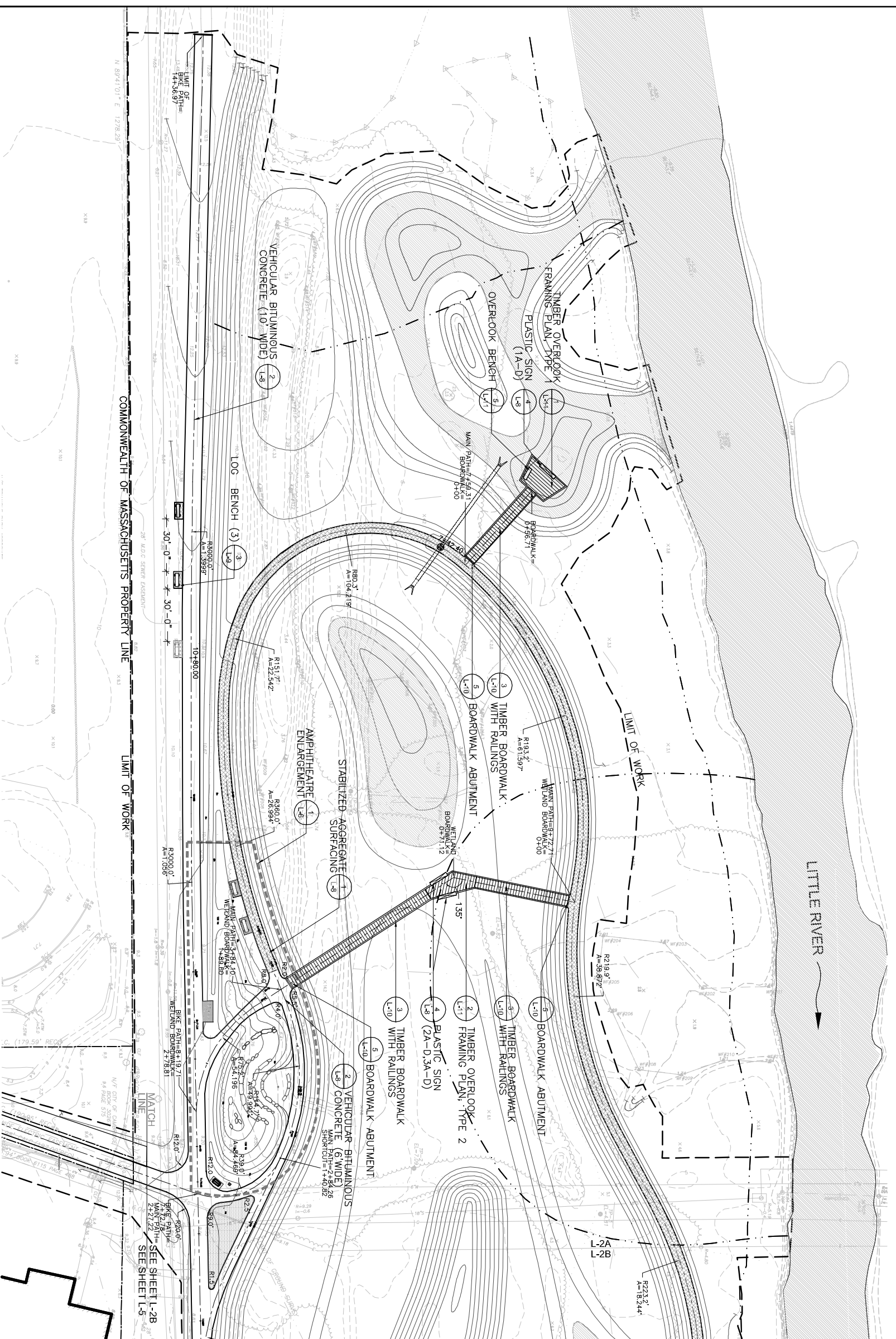
THE BIOENGINEERING GROUP, INC.
18 Commercial St.
Salem, MA 01970
978.740.9106 (ph)
978.740.4097 (fax)
www.bioengineering.com

| | |
|-------------|----------|
| Scale | 1"=30' |
| Date | 11/05/04 |
| Job No. | CAM |
| Designed by | KJG |
| Drawn by | KJG |
| Checked by | |
| Approved by | |

THE WORKS
CAMBRIDGE
CONCORD
ROCKY HILL

CITY OF CAMBRIDGE, MASSACHUSETTS
CAMBRIDGE PARK DRIVE DRAINAGE IMPROVEMENTS
CONTRACT NO. 12
SEDIMENTATION AND EROSION CONTROL PLAN: EAST

Sheet No.
L-1B
File No.



LEGEND

- — — — — PROPERTY LINE
- DIRECTION OF FLOW (LITTLE RIVER)
- - - - - LIMIT OF WORK
- - - - - EXISTING CONTOUR
- - - - - PROPOSED CONTOURS (SEE GRADING PLANS)
- - - - - CENTER LINE
- - - - - OPEN WATER
- ▨ STABILIZED AGGREGATE SURFACING
- ▨ BITUMINOUS CONCRETE PATH
- ▨ TIMBER BOARDWALK WITH BUMPERS
- ▨ TIMBER BOARDWALK WITH RAILINGS
- ▨ TIMBER OVERLOOK, TYPE 1
- ▨ TIMBER OVERLOOK, TYPE 2
- ▨ OVERLOOK BENCH
- ▨ PLASTIC SIGN
- ▨ LOG BENCH
- ▨ ENLARGEMENT AREA
- MANHOLE
- PC POINT OF CURVATURE
- PCC POINT OF COMPOUND CURVE
- PRC POINT OF REVERSE CURVATURE
- PT POINT OF TANGENCY
- R RADIUS
- A ANGLE

NOTE:
1. FOR GENERAL LAYOUT AND MATERIALS
NOTES, SEE L0



100% DESIGN
DRAFT SUBMITTAL
05-NOV-2004

SEA S E A Consultants Inc.
Science/Engineering/Architecture
CAMBRIDGE, MASSACHUSETTS
ROCKY HILL, CONNECTICUT
CONCORD, NEW HAMPSHIRE

MWH
BOSTON
MASSACHUSETTS

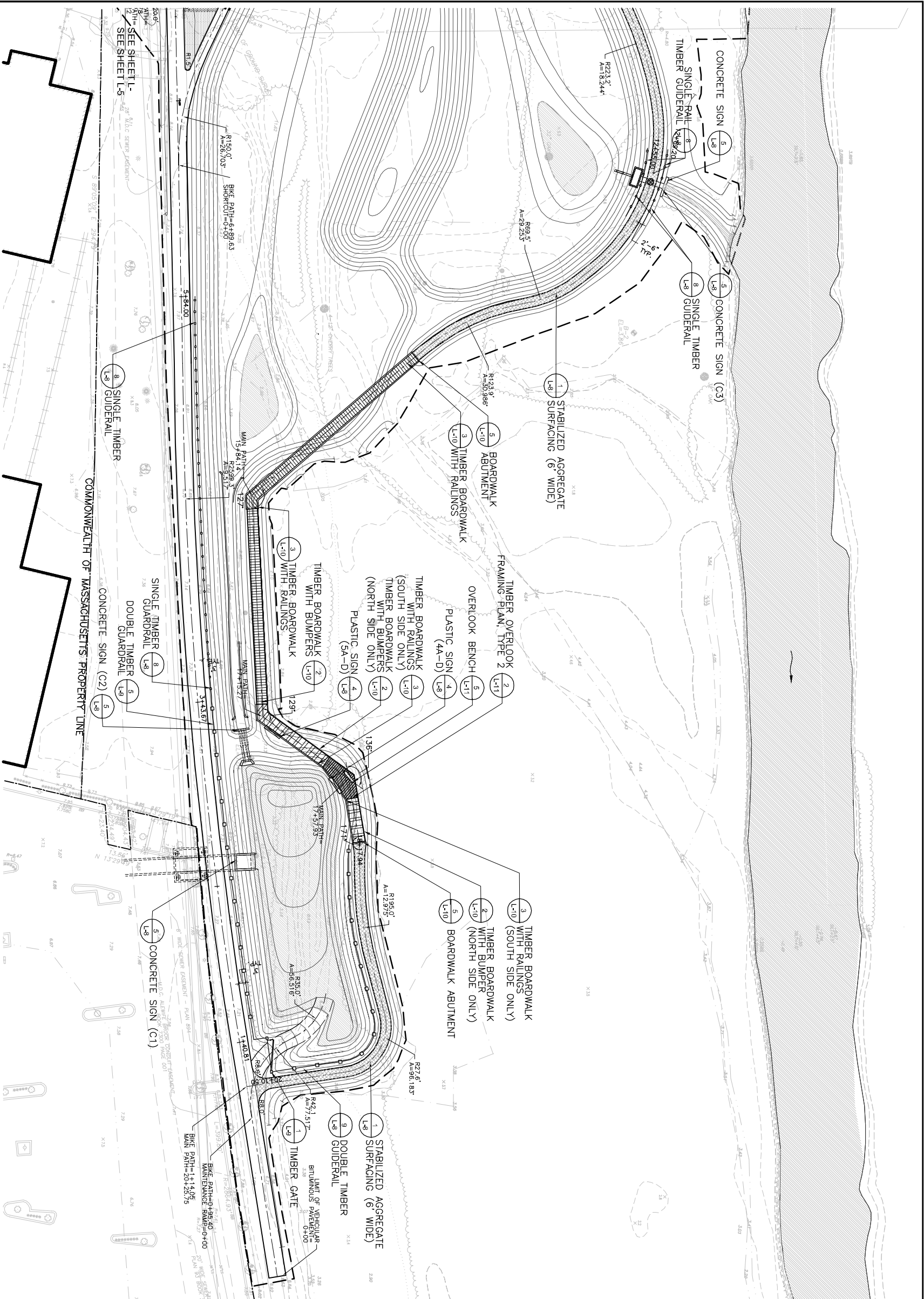
BIOENGINEERING
GROUP, INC.
18 Commercial St.
Salem, MA 01970
978-740-0096 (ph)
978-740-0097 (fax)
www.bioengineeringgroup.com

| | |
|-------------|-----------|
| Scale | 1"=30' |
| Date | 11.05.04 |
| Job No. | CAM1 |
| Designed by | KJG |
| Drawn by | KJG |
| Checked by | |
| Approved by | |
| No. | |
| Description | REVISIONS |

THE WORKS
CAMBRIDGE
DESIGN PARTNERSHIP
100 PARK DRIVE
CAMBRIDGE, MA 02142

CITY OF CAMBRIDGE, MASSACHUSETTS
CAMBRIDGEPARK DRIVE DRAINAGE IMPROVEMENTS
CONTRACT NO. 12
LAYOUT AND MATERIALS PLAN: WEST

Sheet No.
L-2A
File No.



LEGEND

- PROPERTY LINE
- DIRECTION OF FLOW (LITTLE RIVER)
- LIMIT OF WORK
- EXISTING CONTOUR
- PROPOSED CONTOURS (SEE GRADING PLANS)
- CENTER LINE
- OPEN WATER
- STABILIZED AGGREGATE SURFACING
- BITUMINOUS CONCRETE PATH
- TIMBER BOARDWALK WITH BUMPERS
- TIMBER BOARDWALK WITH RAILINGS
- TIMBER BOARDWALK (RAILING AND BUMPER)
- SINGLE TIMBER GUIDERAIL
- DOUBLE TIMBER GUIDERAIL
- TIMBER GATE
- TIMBER OVERLOOK, TYPE 2
- ENLARGEMENT AREA
- OVERLOOK BENCH
- PLASTIC SIGN
- MANHOLE
- POINT OF CURVATURE
- POINT OF COMPOUND CURVATURE
- POINT OF REVERSE CURVATURE
- POINT OF TANGENCY
- RADIUS
- ANGLE

NOTE:
1. FOR GENERAL LAYOUT AND MATERIALS NOTES, SEE L-0



100% DESIGN
DRAFT SUBMITTAL
05-NOV-2004

SEA S E A Consultants Inc.
Science/Engineering/Architecture
CAMBRIDGE, MASSACHUSETTS
ROCKY HILL, CONNECTICUT
CONCORD, NEW HAMPSHIRE

MWH
BOSTON
MASSACHUSETTS

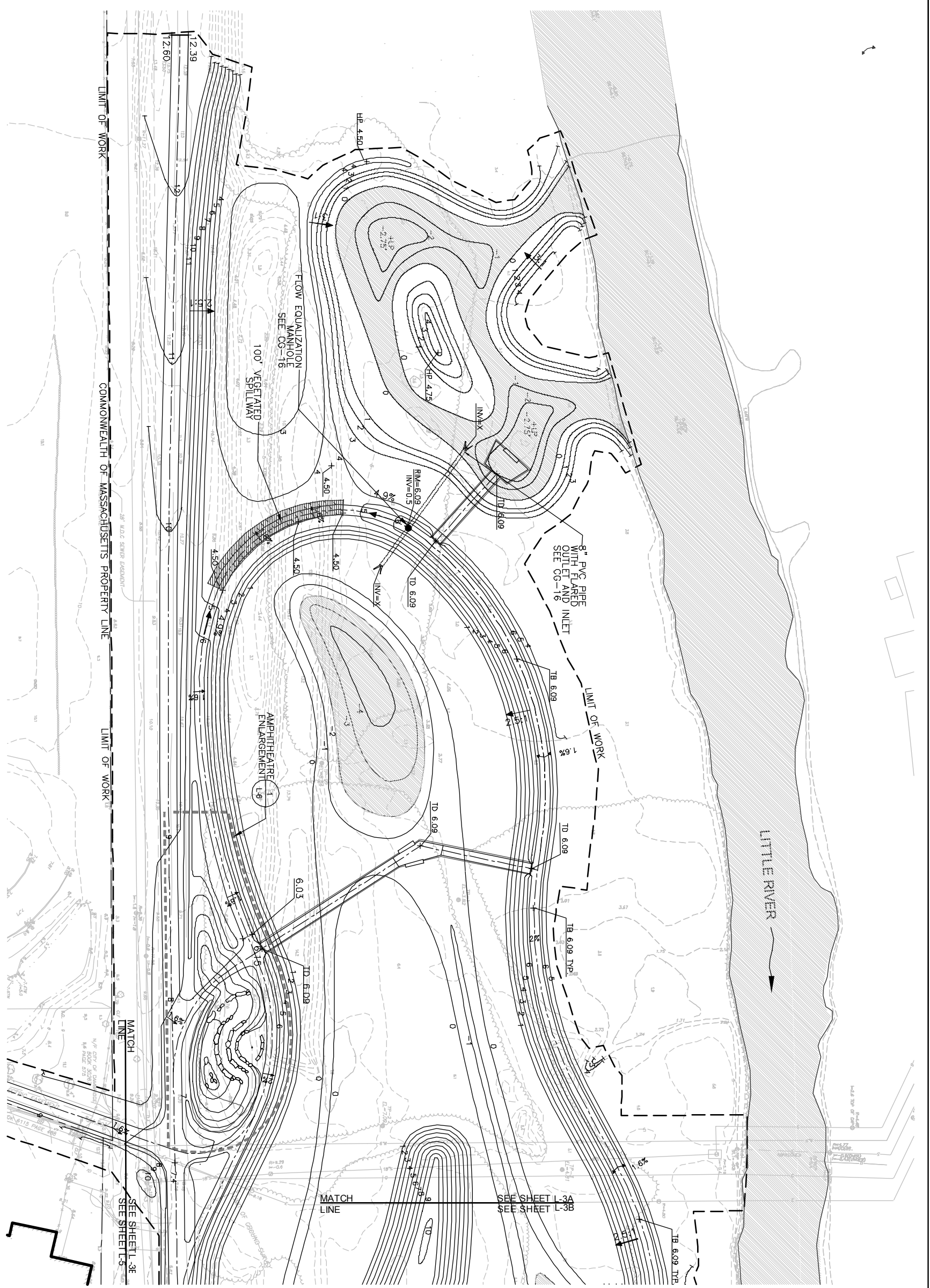
THE BIOENGINEERING GROUP, INC.
18 Commercial St.
Salem, MA 01970
978 740-0096 (PA)
978 740-0097 (FAX)
www.thebioengineering.com

| | |
|-------------|-----------|
| Scale | 1"=30' |
| Date | 11.05.04 |
| Job No. | CAM |
| Designed by | KJG |
| Drawn by | KJG |
| Checked by | |
| Approved by | |
| No. | |
| Description | REVISIONS |
| Date | |

THE WORKS
CAMBRIDGE
DESIGN PARTNERSHIP
OF PAPER INDUSTRIES

CITY OF CAMBRIDGE, MASSACHUSETTS
CAMBRIDGEPARK DRIVE DRAINAGE IMPROVEMENTS
CONTRACT NO. 12
LAYOUT AND MATERIALS PLAN: EAST

Sheet No.
L-2B
File No.



LEGEND

- PROPERTY LINE
- DIRECTION OF FLOW (LITTLE RIVER)
- - - LIMIT OF WORK
- OPEN WATER
- ▨ 5' CONTOUR PROPOSED
- PROPOSED CONTOUR
- EXISTING CONTOUR
- +4.5 SPOT ELEVATION
- +HP 3.4 HIGH POINT
- +LP 1.8 LOW POINT
- +TD TOP OF BOARDWALK DECK
- +TW TOP OF WALL
- +TB TOP OF BERM
- + INV INVERT
- 2.5% SLOPE
- 2% CROWNED
- UNDERGROUND PIPE
- FLARED PIPE END
- MANHOLE
- ▨ VEGETATED SPILLWAY
- ▨ ENLARGEMENT AREA

NOTES:

1. ALL GRADES ARE SHOWN TO FINAL. SUBGRADE ELEVATIONS SHALL BE SPECIFIED AND ACCORDANT WITH WETLAND AND TOP SOIL PLACEMENT AND GRADING.
2. ALL FINAL GRADES SHALL BE ESTABLISHED WITH 1" OF WETLAND SOIL OR 1" OF UPLAND SOIL.
3. WETLAND SOIL SHALL BE PLACED AT ELEVATION -2 TO 1. UPLAND SOIL SHALL BE PLACED AT ELEVATIONS ABOVE ONE. WHERE THERE IS PLANTING.
4. TEMPORARY EROSION CONTROL MATTING SHALL BE PLACED ON SPILLWAYS, IN HIGH MASHY AREAS SPECIFIED FOR GREATER SEDIMENT CONTROL FOR MATTING DESCRIPTION.
5. SEE SPECIFICATION 01568, EROSION & SEDIMENT CONTROL, FOR DESCRIPTION OF PERMANENT E.C. MATTING.
6. WIRE MESH FOR RODENT CONTROL WILL BE LAID PRIOR TO THE PLACEMENT OF PLANTING SOIL. SEE DETAIL 3L-13.
7. FOR GENERAL GRADING NOTES, SEE L-0.



100% DESIGN
DRAFT SUBMITTAL
 05-NOV-2004

SEA Consultants Inc.
 Schenck Engineering/Architecture
 CAMBRIDGE, MASSACHUSETTS
 CONCORD, NEW HAMPSHIRE
 ROCKY HILL, CONNECTICUT

MWH
 BOSTON
 MASSACHUSETTS

THE BIOENGINEERING GROUP, INC.
 18 Commercial St.
 Salem, MA 01970
 978.740.9106 (PH)
 978.740.4097 (FAX)
 WWW.BIOENGINEERING.COM

| | |
|-------------|-----------|
| Scale | 1"=30' |
| Date | 11/05/04 |
| Job No. | CAM |
| Designed by | KJG |
| Drawn by | KJG |
| Checked by | No. |
| Approved by | REVISIONS |

THE WORKS
 CAMBRIDGE OFFICE
 100 BRIDGE STREET
 CAMBRIDGE, MA 02142

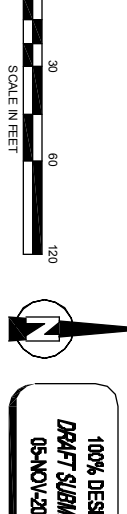
CITY OF CAMBRIDGE, MASSACHUSETTS
 CAMBRIDGE PARK DRIVE DRAINAGE IMPROVEMENTS
 CONTRACT NO. 12
 GRADING PLAN: WEST

Sheet No.
L-3A
 File No.



LEGEND

- PROPERTY LINE
 - DIRECTION OF FLOW (LITTLE RIVER)
 - - - LIMIT OF WORK
 - ▨ OPEN WATER
 - ~ 5' CONTOUR PROPOSED
 - ~ PROPOSED CONTOUR
 - ~ EXISTING CONTOUR
 - ++5 SPOT ELEVATION
 - +HP 3.4 HIGH POINT
 - +LP 1.8 LOW POINT
 - +TD TOP OF BOARDWALK DECK
 - +TW TOP OF WALL
 - +TB TOP OF BERM
 - + INV INVERT
 - 2.5% SLOPE
 - 2% CROWNED
 - ▨ CABLED CONCRETE BLOCK
 - ▨ CELLULAR CONFINEMENT REINFORCEMENT
 - ▨ STONE FOR PIPE ENDS
 - ▨ COIR FASCINE
 - ▨ PROPOSED PIPES
 - ▨ HEADWALL
 - ▨ HEADWALL WITH WINGWALLS
 - ▨ MANHOLE
 - ▨ BOX CULVERT AND HEADWALL
 - ▨ COMPOUND OUTLET STRUCTURE
 - ▨ VEGETATED SPILLWAY
 - ▨ PERMANENT EROSION CONTROL MATTING
- NOTES:
1. ALL GRADES ARE SHOWN TO FINAL. SUBGRADE ELEVATIONS SHALL BE ESTABLISHED AS INDICATED IN THE SPECIFICATIONS TO ACCOMMODATE WETLAND AND TOP SOIL PLACEMENT AND GRADING.
 2. ALL FINAL GRADES SHALL BE ESTABLISHED WITH 1" OF WETLAND SOIL OR 1" OF UPLAND SOIL.
 3. WETLAND SOIL SHALL BE PLACED AT ELEVATION -2 TO 1. UPLAND SOIL SHALL BE PLACED AT ELEVATIONS ABOVE ONE, WHERE THERE IS PLANTING.
 4. TEMPORARY EROSION CONTROL MATTING SHALL BE PLACED ON SPILLWAYS, IN-HIGH MARSH AREAS, AND ALL SLOPES GREATER THAN 3:1. SEE SPEC 01568 - EROSION & SEDIMENT CONTROL FOR MATTING DESCRIPTION.
 5. SEE SPECIFICATION 01568, EROSION & SEDIMENT CONTROL FOR DESCRIPTION OF PERMANENT E.C. MATTING.
 6. WIRE MESH FOR RODENT CONTROL WILL BE LAID PRIOR TO THE PLACEMENT OF PLANTING SOIL. SEE DETAIL 3L-13.
 7. FOR GENERAL GRADING NOTES, SEE L-0.



100% DESIGN
DRAFT SUBMITTAL
 05-NOV-2004

SEA S E A Consultants Inc.
 Science/Engineering/Architecture
 CAMBRIDGE, MASSACHUSETTS
 CONCORD, NEW HAMPSHIRE
 ROCKY HILL, CONNECTICUT

MWH
 MASSACHUSETTS
 BOSTON

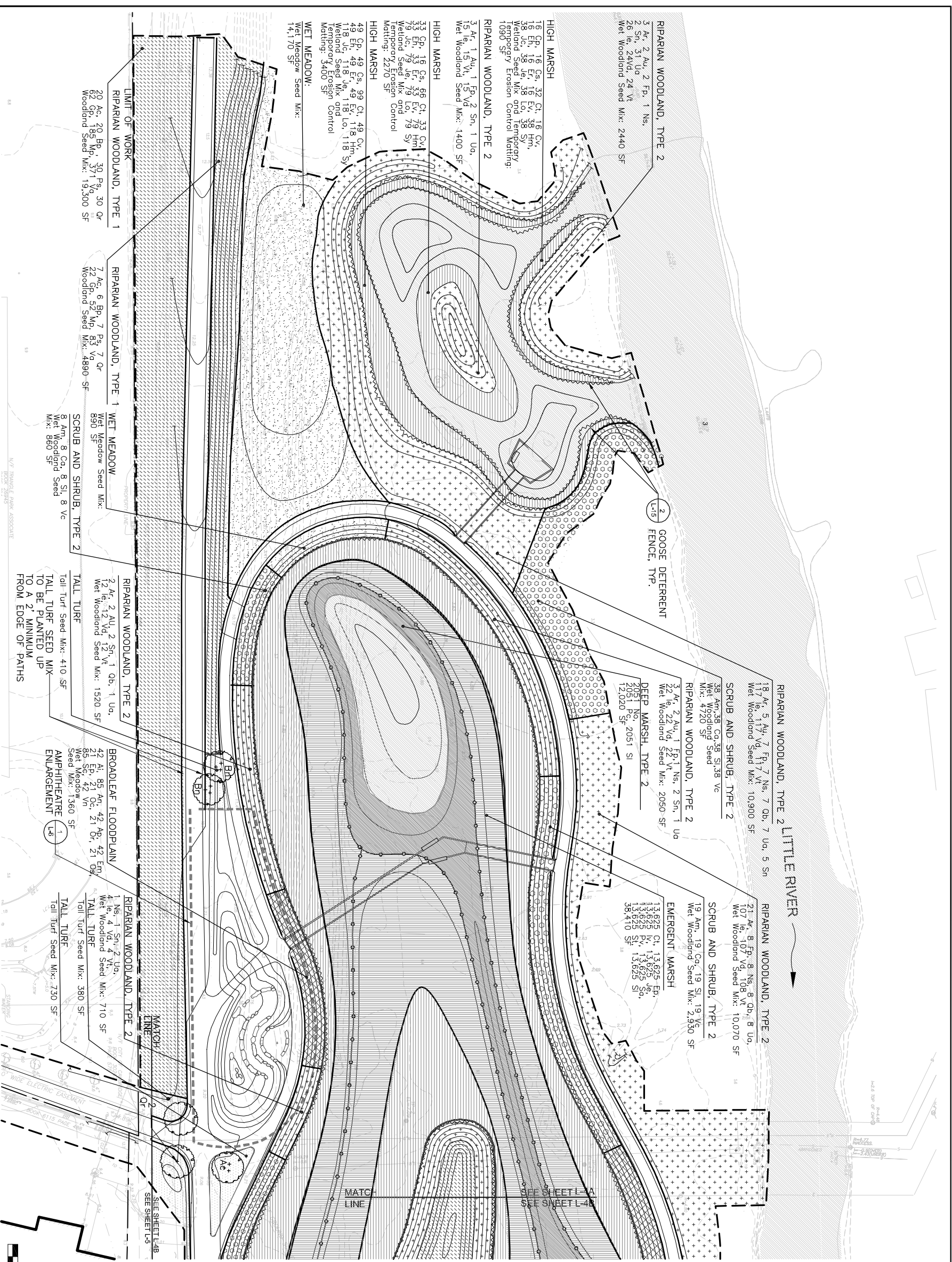
THE BIOENGINEERING GROUP, INC.
 18 Commercial St.
 Salem, MA 01970
 978.740-0096 (PH)
 978.740-0097 (FAX)
 WWW.BIOENGINEERING.COM

| | |
|-------------|----------|
| Scale | 1"=30' |
| Date | 11/05/04 |
| Job No. | CAM |
| Designed by | KJG |
| Drawn by | KJG |
| Checked by | |
| Approved by | |

THE WORKS
 CAMBRIDGE OFFICE
 100 STATE STREET
 CAMBRIDGE, MA 02142

CITY OF CAMBRIDGE, MASSACHUSETTS
 CAMBRIDGE PARK DRIVE DRAINAGE IMPROVEMENTS
 CONTRACT NO. 12
 GRADING PLAN - EAST

Sheet No.
L-3B
 File No.



SEA S E A Consultants Inc.
Science/Engineering/Architecture
CAMBRIDGE, MASSACHUSETTS ROXY HILL, CONNECTICUT
CONCORD, NEW HAMPSHIRE

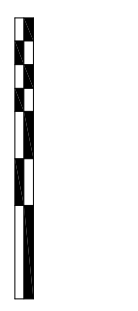
MWH MASSACHUSETTS
BOSTON

THE BIOENGINEERING GROUP, INC.
18 Commercial St.
Salem, MA 01970
www.bioengineeringgroup.com

| | |
|-------------|-----------|
| Scale | 1"=30' |
| Date | 11.05.04 |
| Job No. | CAM |
| Designed by | KJG |
| Drawn by | KJG |
| Checked by | |
| Approved by | |
| No. | |
| Description | REVISIONS |
| Date | |

THE WORKS
CAMBRIDGE
DESIGNER OF RECORD

CITY OF CAMBRIDGE, MASSACHUSETTS
CAMBRIDGE PARK DRIVE DRAINAGE IMPROVEMENTS
CONTRACT NO. 12
PLANTING PLAN - WEST



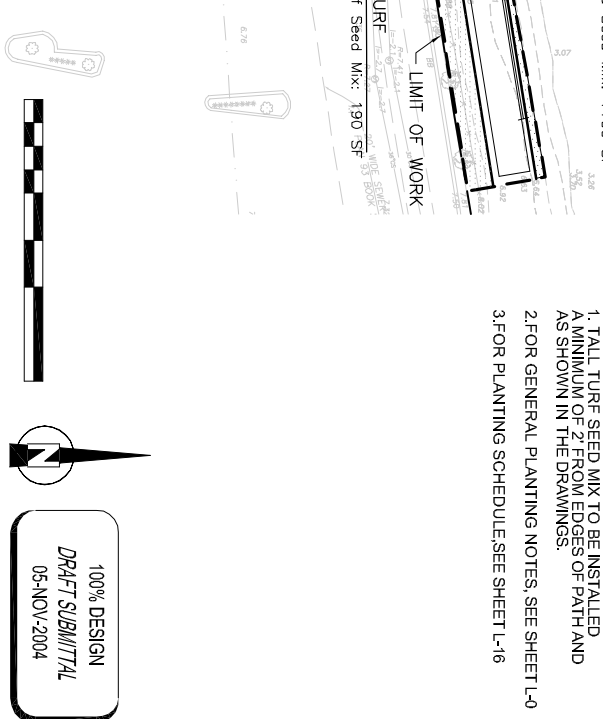
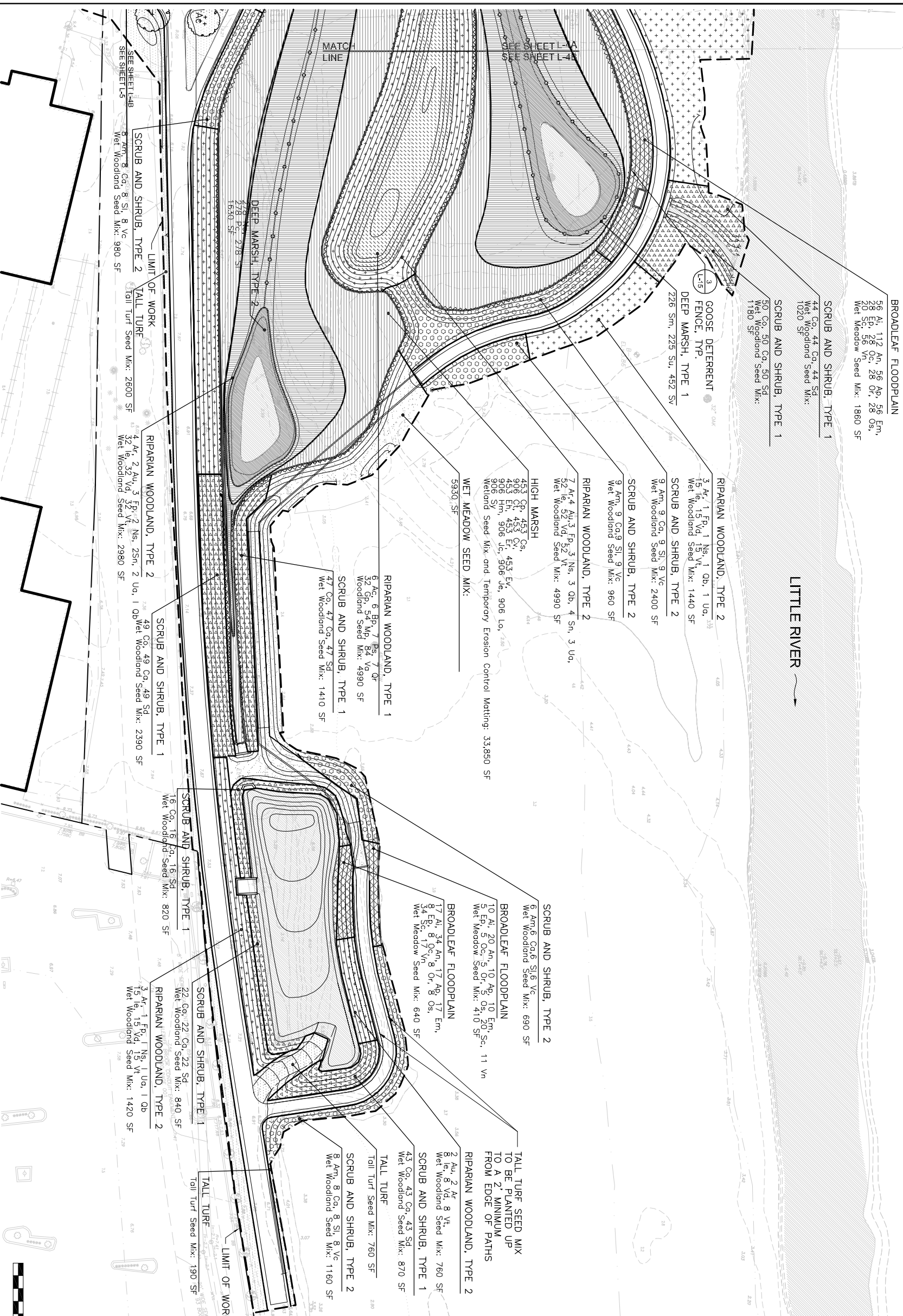
100% DESIGN
DRAFT SUBMITTAL
05-NOV-2004

Sheet No.
L-4A
File No.

LEGEND

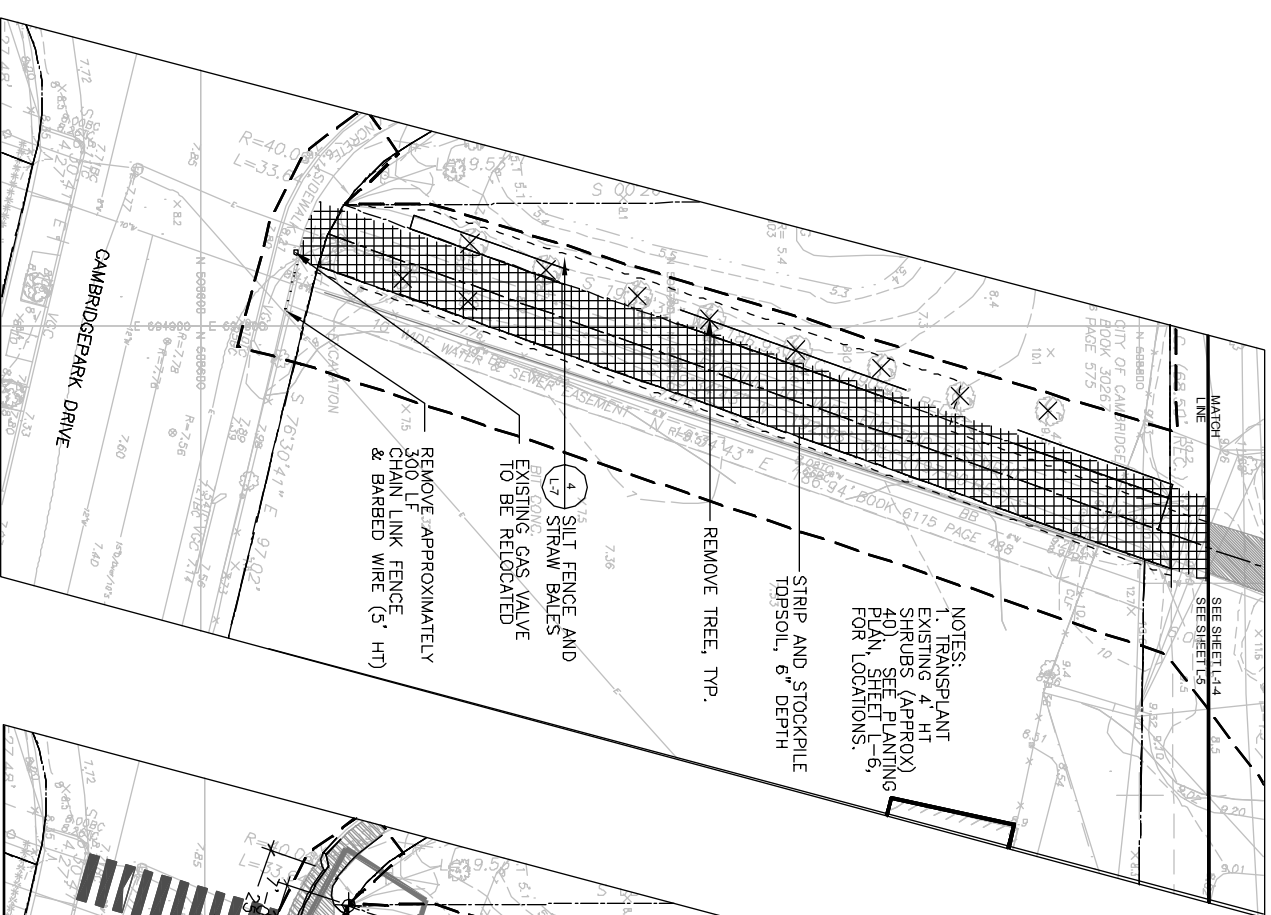
- PROPERTY LINE
- DIRECTION OF FLOW (LITTLE RIVER)
- - - LIMIT OF WORK
- EXISTING CONTOUR
- PROPOSED CONTOURS (SEE GRADING PLANS)
- ▨ RIPARIAN WOODLAND TYPE 1
- ▨ RIPARIAN WOODLAND TYPE 2
- ▨ SCRUB & SHRUB TYPE 1
- ▨ SCRUB & SHRUB TYPE 2
- ▨ TALL TURF SEED MIX
- ▨ WET MEADOW SEED MIX
- ▨ BROADLEAF FLOOD PLAIN
- ▨ HIGH MARSH
Summerset Marsh Elevations +1.0 to +0.5
Compensatory Wetland Elevations +0.5 to 0.0
- ▨ EMERGENT MARSH
Elevations +0.5 to -0.5
- DEEP MARSH TYPE 1:
Elevation -0.5
- ▨ DEEP MARSH:
Elevations -0.5 to -2.0:
- ▨ OPEN WATER
- SPECIMEN TREE
- ⊕ CLUMP TREE
- ⊞ AMPHITHEATRE ENLARGEMENT

NOTES:
 1. TALL TURF SEED MIX TO BE INSTALLED A MINIMUM OF 2' FROM EDGES OF PATH AND AS SHOWN IN THE DRAWINGS.
 2. FOR GENERAL PLANTING NOTES, SEE SHEET L-0
 3. FOR PLANTING SCHEDULE SEE SHEET L-16



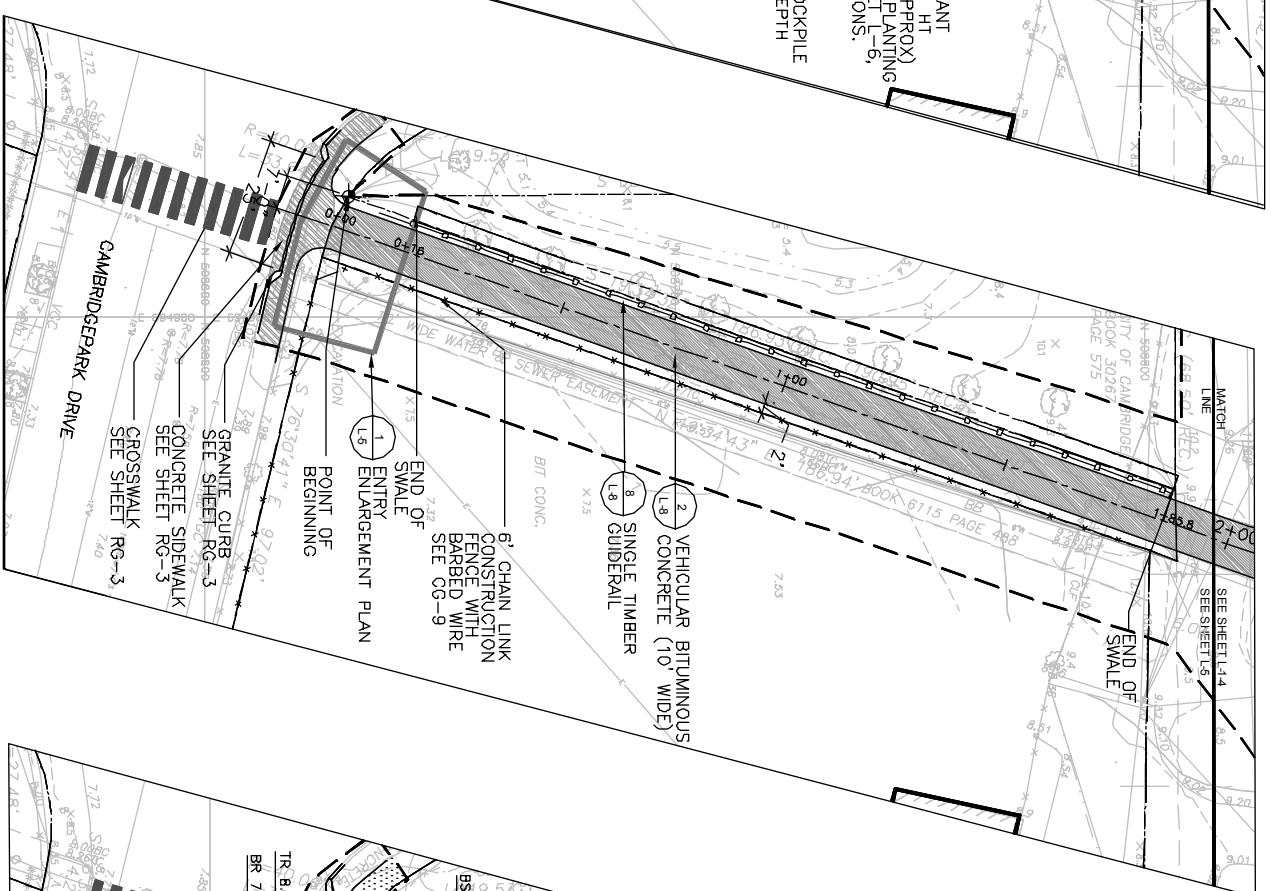
100% DESIGN
 DRAFT SUBMITTAL
 05-NOV-2004

| | | |
|---|---|--|
| <p>SEA S E A Consultants Inc. Science/Engineering/Architecture CAMBRIDGE, MASSACHUSETTS ROCKY HILL, CONNECTICUT CONCORD, NEW HAMPSHIRE</p> | <p>MWH BOSTON MASSACHUSETTS</p> | <p>THE BIOENGINEERING GROUP, INC. 18 Commercial St. Salem, MA 01970 978 740-0096 (PA) 978 740-0027 (FAX) www.thebioengineering.com</p> |
| <p>CITY OF CAMBRIDGE, MASSACHUSETTS CAMBRIDGEPARK DRIVE DRAINAGE IMPROVEMENTS CONTRACT NO. 12 PLANTING PLAN: EAST</p> | | |
| <p>Scale: 1"=30' Date: 11.05.04 Job No.: CAM Designed by: KIG Drawn by: KIG Checked by: [] Approved by: []</p> | | <p>No. [] Description [] REVISIONS</p> |
| <p>Sheet No. [] File No. []</p> | | <p>L-4B</p> |



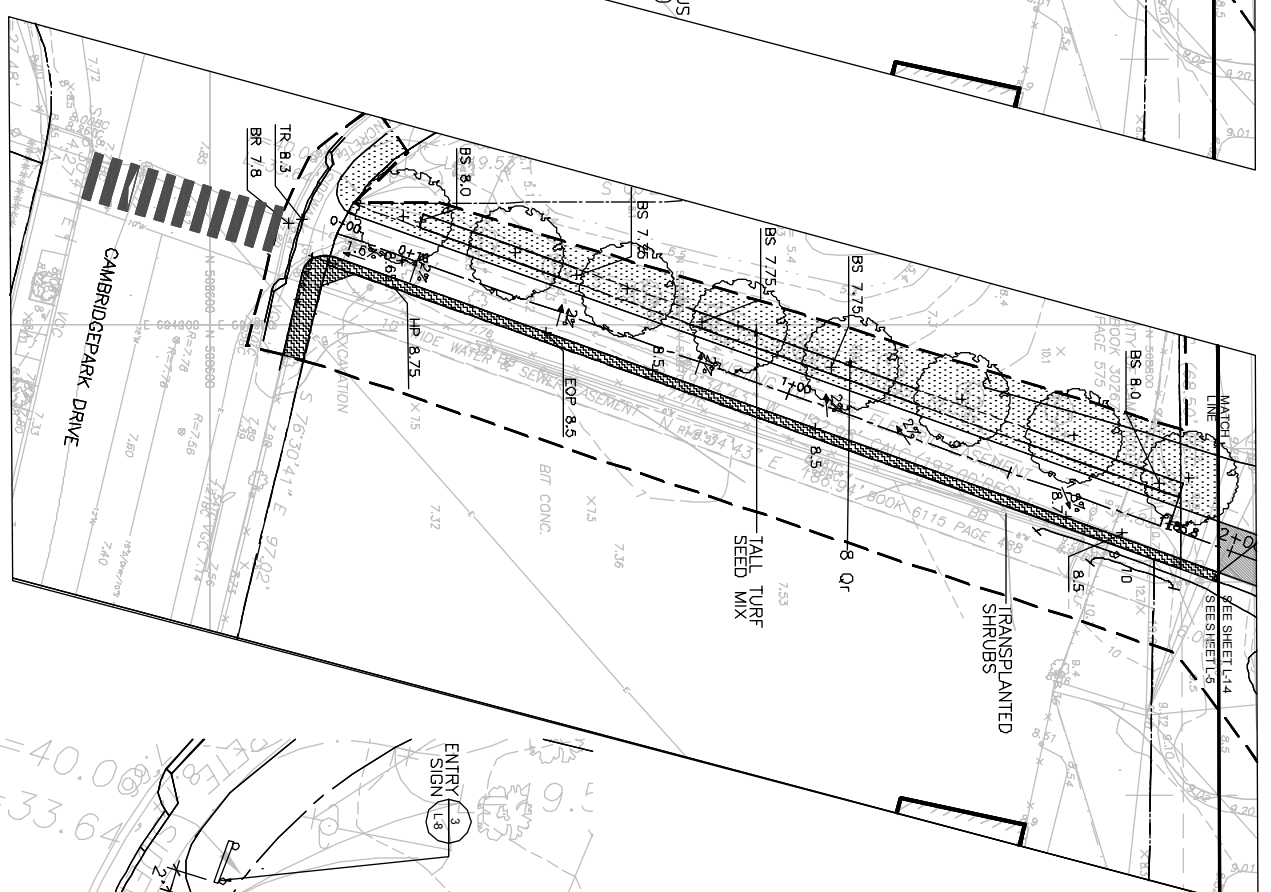
LEGEND

- PROPERTY LINE
- LIMIT OF WORK
- - - EXISTING FENCE TO REMOVED
- - - EXISTING FENCE AND STRAW BALES
- - - EXISTING TREE TO BE REMOVED
- - - EXISTING SHRUBS TO BE REPLANTED (SEE NOTE 1)
- ▒ STRIP & STOCKPILE EXISTING TOPSOIL



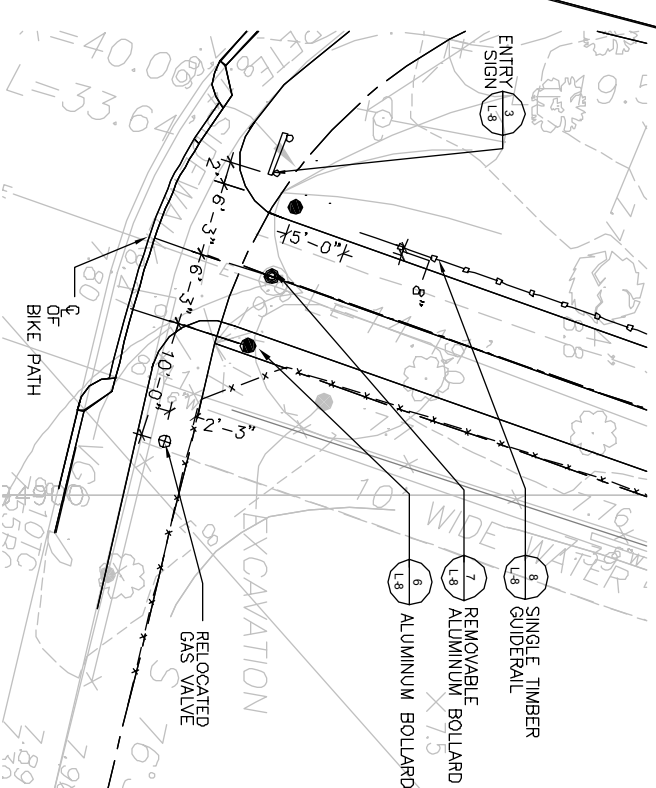
LEGEND

- PROPERTY LINE
- LIMIT OF WORK
- SINGLE TIMBER GUIDE RAIL
- - - 5 HT CHAIN LINK FENCE WITH BARBED WIRE
- ▒ VEHICULAR BITUMINOUS CONCRETE PAVEMENT
- ▒ CONCRETE SIDEWALK
- ⊕ POINT OF BEGINNING



LEGEND

- PROPERTY LINE
- LIMIT OF WORK
- PROPOSED 5' CONTOUR
- MINOR CONTOUR
- EXISTING CONTOUR
- +4.5 SPOT ELEVATION
- +HP 3.4 HIGH POINT
- +EOP 2.5 EDGE OF PAVEMENT
- +BS 2.5 BOTTOM OF SWALE
- 2.5% SLOPE
- +LP 1.8 LOW POINT
- TR TOP OF RAMP
- +BR 1.8 BOTTOM OF RAMP
- TALL TURF SEED MIX
- ▒ TRANSPLANTED SHRUBS
- ⊕ SPECIMEN TREE



1 ENTRY ENLARGEMENT PLAN

SCALE: 1/8"=1'

ENTRY: SITE PREP/EROSION CONTROL

SCALE: 1"=20'

ENTRY: LAYOUT AND MATERIALS

SCALE: 1"=20'

ENTRY: GRADING AND PLANTING PLAN

SCALE: 1"=20'



100% DESIGN
DRAFT SUBMITTAL
05-NOV-2004

SEA Consultants Inc.
Schenck Engineering/Architecture
CAMBRIDGE, MASSACHUSETTS
ROCKY HILL, CONNECTICUT
CONCORD, NEW HAMPSHIRE

MWH
BOSTON
MASSACHUSETTS

THE BIOENGINEERING GROUP, INC.
18 Commercial St.
Salem, MA 01970
978-746-9196 (PH)
978-746-9397 (FAX)
www.bioengineering.com

| Scale | AS NOTED |
|-------------|-------------|
| Date | 11/05/04 |
| Job No. | CAM |
| Designed by | KJG |
| Drawn by | KJG |
| Checked by | No. |
| Approved by | Description |
| | REVISIONS |

THE WORKS
CAMBRIDGE OFFICE
100 STATE STREET
CAMBRIDGE, MA 02142

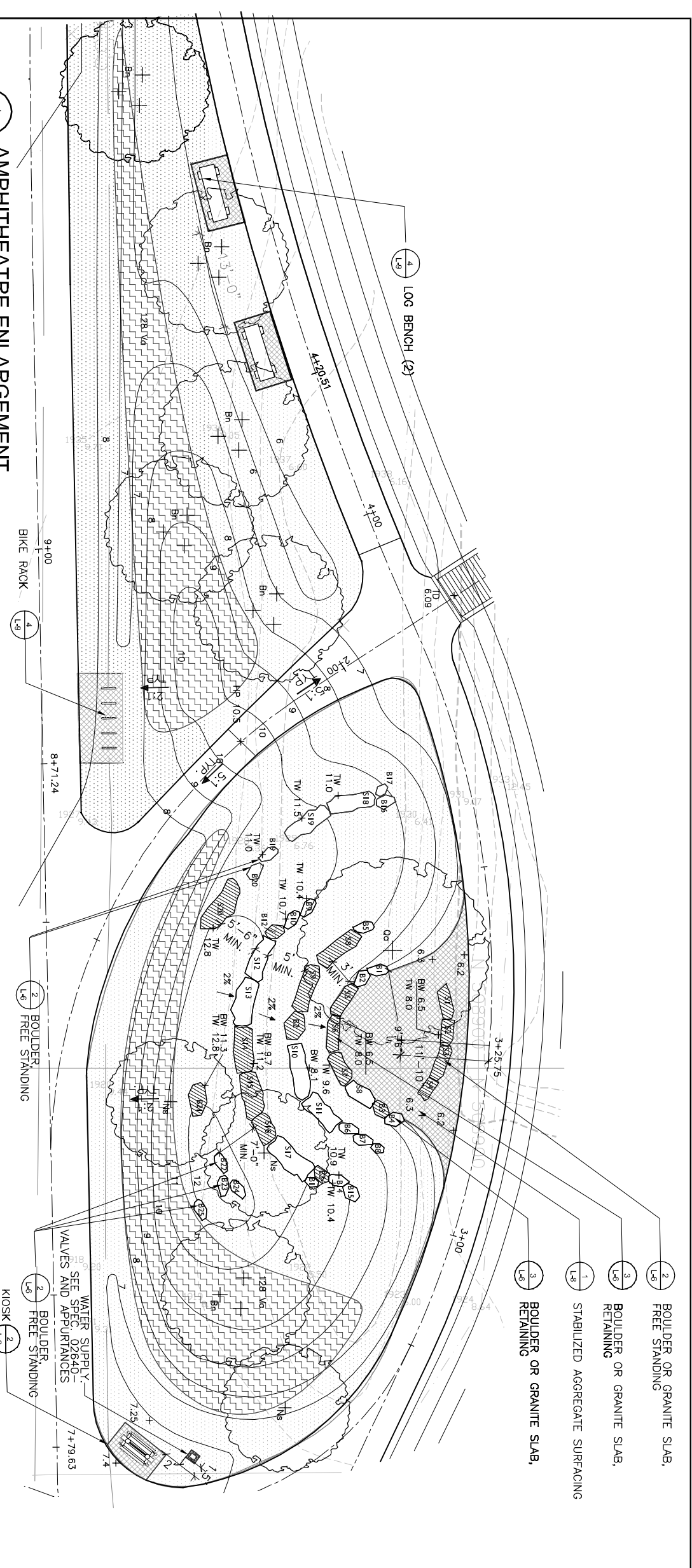
CITY OF CAMBRIDGE, MASSACHUSETTS
CAMBRIDGE PARK DRIVE DRAINAGE IMPROVEMENTS
CONTRACT NO. 12
SPECIAL PLAN: ENTRY TREATMENT - CAMBRIDGE PARK DRIVE

Sheet No. **L-5**
File No.

LEGEND

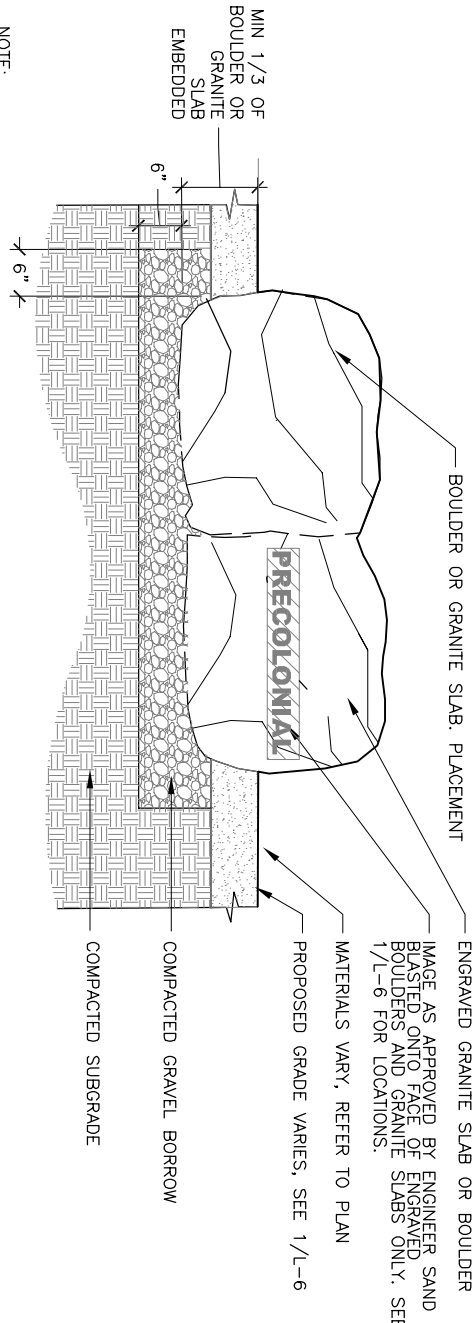
- 5 CONTOUR PROPOSED
- MINOR CONTOUR
- EXISTING CONTOUR
- SPOT ELEVATION
- BW 8.1
- TW 10.4
- SLOPE 5:1 TYP.
- STABILIZED AGGREGATE SURFACING
- BOULDER, SEE SPEC 02980
- ENGRAVED BOULDER, SEE SPEC 02980
- GRANITE BENCH SLAB, SEE SPEC
- ENGRAVED GRANITE BENCH SLAB, SEE SPEC
- KIOSK
- WATER SUPPLY
- BIKE RACK
- LOG BENCH
- LOW SHRUBS
- TALL TURF SEED MIX
- SPECIMEN TREE
- CLUMP TREE

NOTE:
1. FOR PLANT SCHEDULE,
SEE L-16



1 AMPHITHEATRE ENLARGEMENT

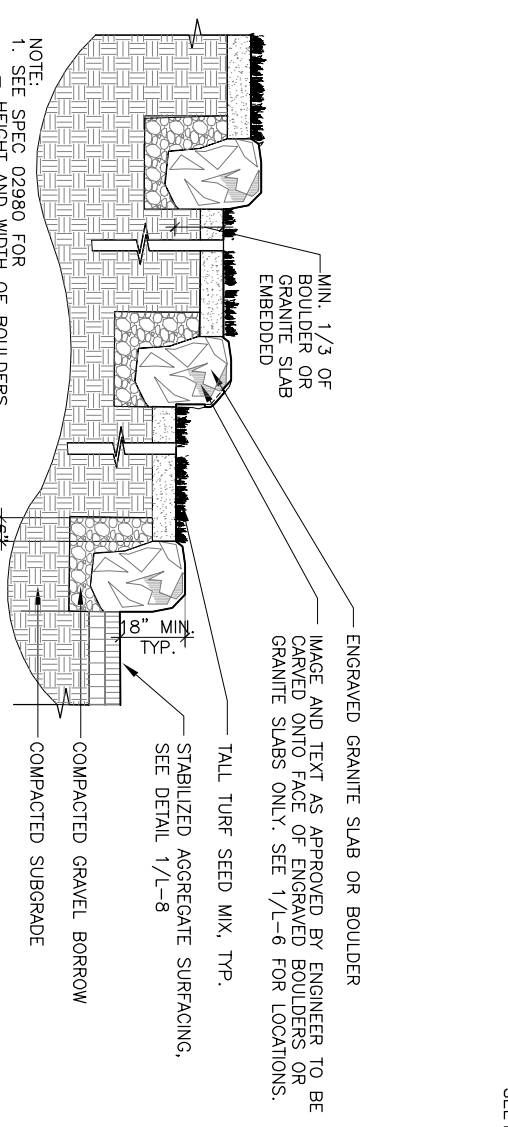
SCALE: 1"=10'



NOTE:
1. SEE SPEC 02980-SITE IMPROVEMENTS FOR
HEIGHT AND WIDTH OF BOULDERS
TEXT AND GRAPHICS REQUIREMENT
FOR ENGRAVED BOULDERS AND
GRANITE SLAB

2 BOULDER OR GRANITE SLAB, FREE STANDING

SCALE: 1"=6"



NOTE:
1. SEE SPEC 02980 FOR
HEIGHT AND WIDTH OF BOULDERS
TEXT AND GRAPHICS REQUIREMENT
FOR ENGRAVED BOULDERS AND
GRANITE SLAB

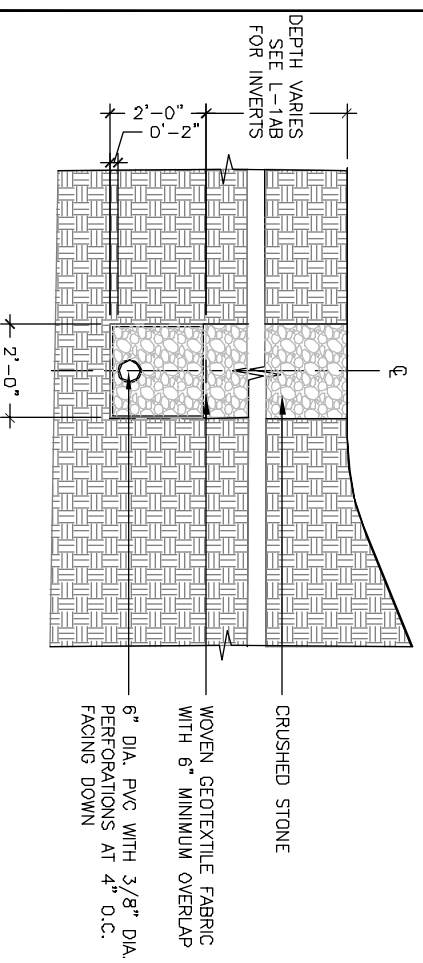
3 BOULDER OR GRANITE SLAB, RETAINING

SCALE: 1"=6"

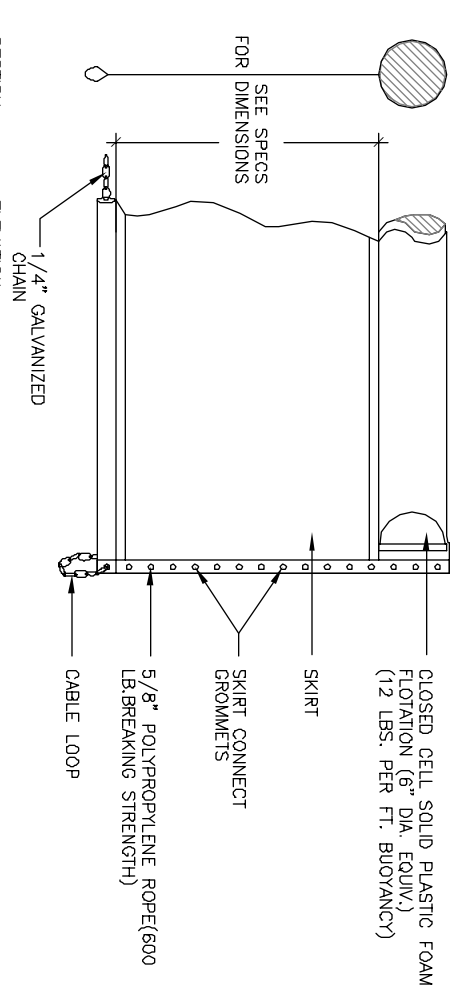
| Scale | AS NOTED |
|-------------|----------|
| Date | 11.05.04 |
| Job No. | CAM |
| Designed by | KJG |
| Drawn by | KJG |
| Checked by | |
| Approved by | |

| No. | Description | REVISIONS |
|-----|-------------|-----------|
| | | |
| | | |
| | | |

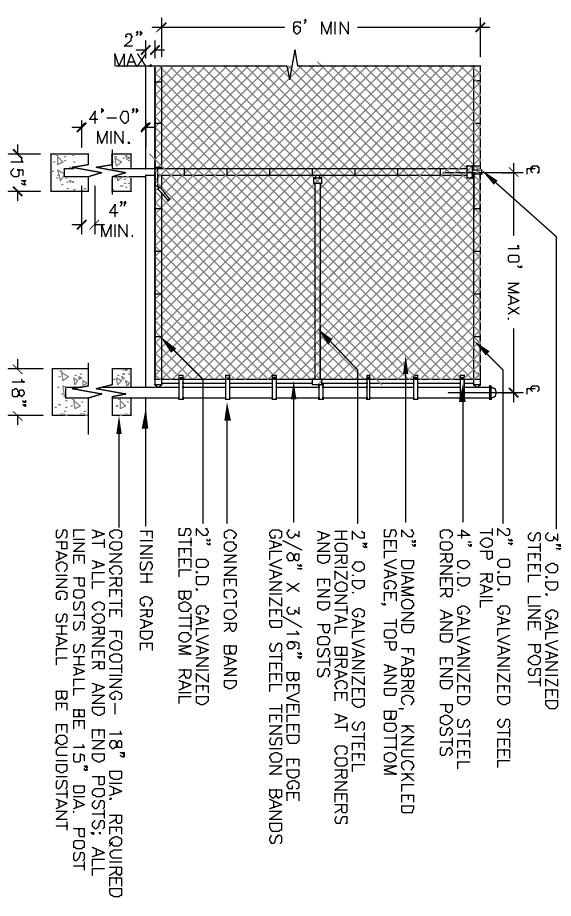
100% DESIGN
DRAFT SUBMITTAL
05-NOV-2004



1 FRENCH DRAIN
SCALE: L-7

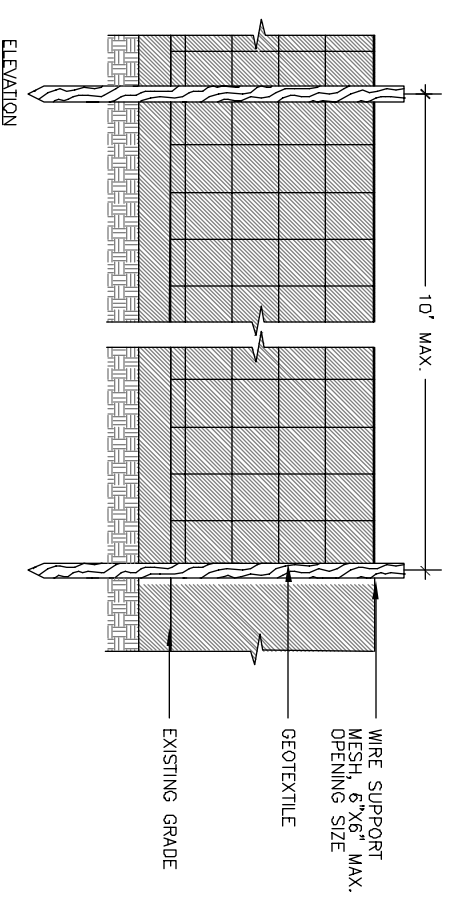


2 TURBIDITY CURTAIN
SCALE: L-7

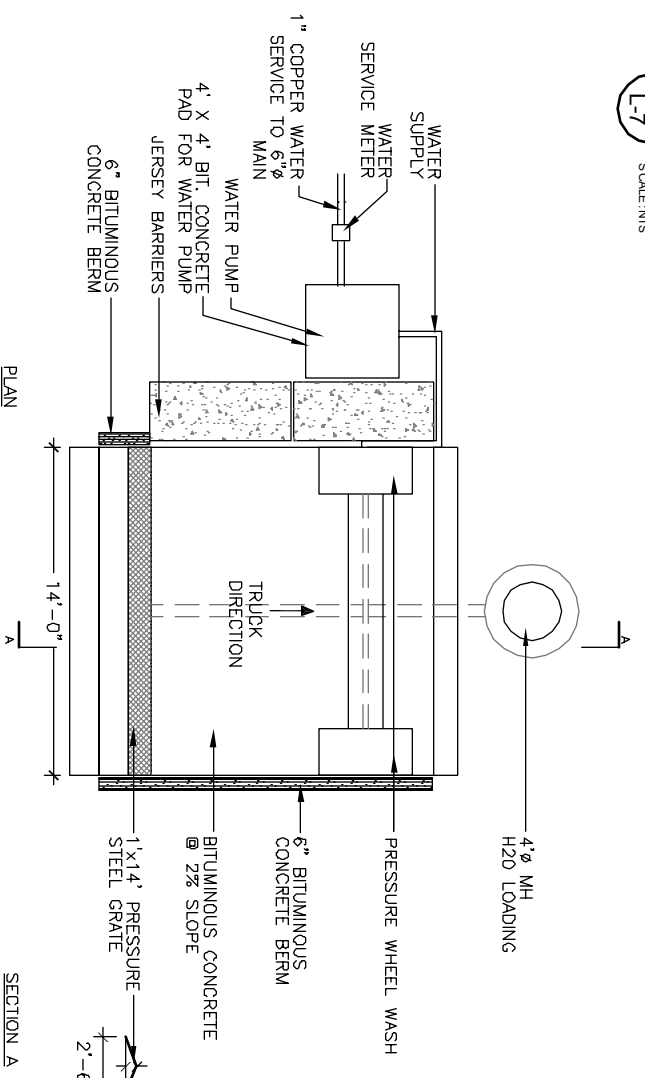


3 6' CHAIN LINK CONSTRUCTION FENCE
SCALE: L-7

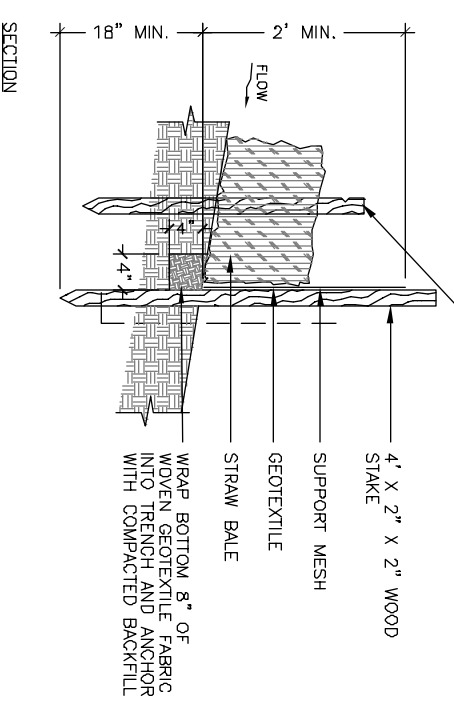
- NOTES:
1. THE HEIGHT OF A SILT FENCE SHALL NOT EXCEED 36 INCHES (90 CM).
 2. PURCHASE GEOTEXTILE IN A CONTINUOUS ROLL CUT TO THE LENGTH OF THE BARRIER TO AVOID THE USE OF JOINTS.
 3. DIG A 4" X 4" TRENCH ALONG THE LINE OF POSTS AND UPSLOPE FROM THE BARRIER TO SECURE GEOTEXTILE BELOW GRADE.
 4. ATTACH WIRE SUPPORT MESH TO THE UPSLOPE SIDE OF THE POSTS USING HEAVY DUTY WIRE STAPLES AT LEAST 1 INCH (25 MM) LONG. THE MINIMUM OF 2 INCHES (5 CM).
 5. ATTACH GEOTEXTILE TO THE FENCE USING STAPLES OR WIRE. BURY THE BOTTOM 8 INCHES (20 CM) OF THE FABRIC IN THE TRENCH. THE FABRIC SHALL NOT EXTEND MORE THAN 36 INCHES (90 CM) ABOVE EXISTING GRADE.



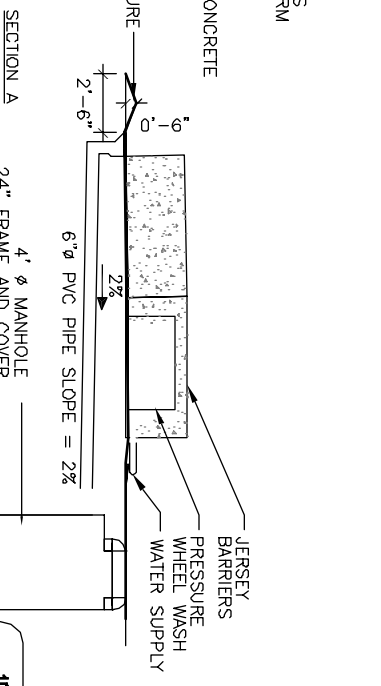
4 SILT FENCE AND STRAW BALES
SCALE: L-7



5 TRUCK WASHING AREA
SCALE: L-7



- NOTES:
1. PRESSURE WHEEL WASH SHALL BE DIRTSQUIRT WHEEL WASH OR APPROVED EQUAL.
 2. WATER PUMP SHALL BE DUSTPRO OR APPROVED EQUAL.



100% DESIGN
DRAFT SUBMITTAL
05-NOV-2004

SEA Consultants Inc.
Schenck Engineering/Architecture
CAMBRIDGE, MASSACHUSETTS
ROCKHILL, CONNECTICUT
CONCORD, NEW HAMPSHIRE

MWH
BOSTON
MASSACHUSETTS

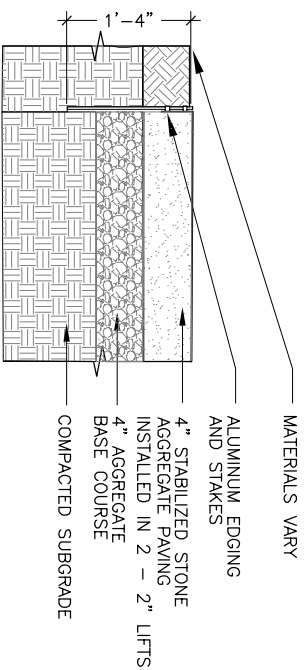
THE BIOENGINEERING GROUP, INC.
18 Commercial St.
Salem, MA 01970
978-740-9106 (ph)
978-740-9107 (fax)
www.bioengr.com

| AS NOTED | REVISIONS |
|------------------|-----------|
| Date: 11/05/04 | |
| Scale: AS NOTED | |
| Job No. CAM | |
| Designed by: KJG | |
| Drawn by: KJG | |
| Checked by: | |
| Approved by: | |

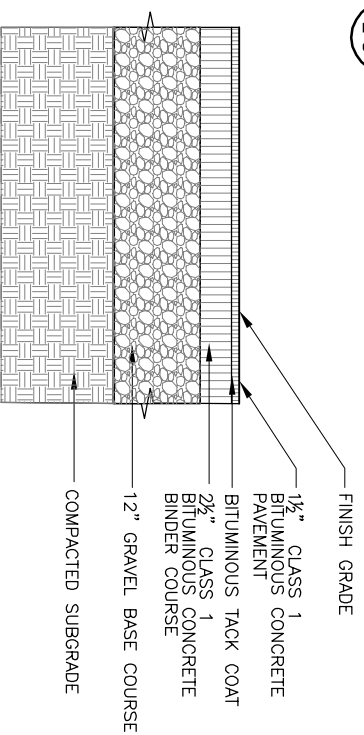
THE WORKS
CAMBRIDGE OFFICE
100 STATE STREET
CAMBRIDGE, MA 02142

CITY OF CAMBRIDGE, MASSACHUSETTS
CAMBRIDGE PARK DRIVE DRAINAGE IMPROVEMENTS
CONTRACT NO. 12
EROSION AND SEDIMENT CONTROL DETAILS

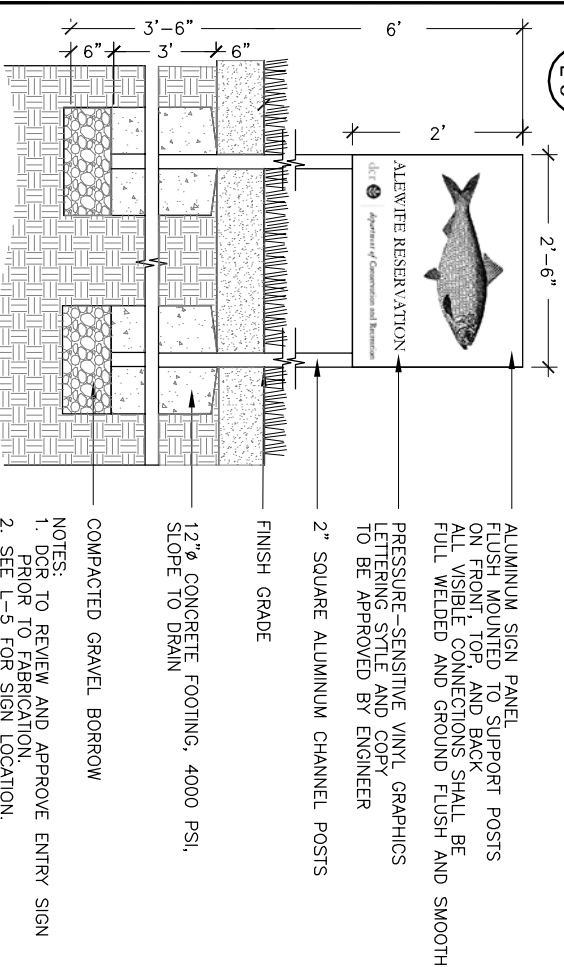
Sheet No. **L-7**
File No.



1 STABILIZED AGGREGATE SURFACING
L-8 SCALE: 1/8"



2 VEHICULAR BITUMINOUS CONCRETE
L-8 SCALE: 1/8"



3 ENTRY SIGN
L-8 SCALE: 1/8"

ALUMINUM SIGN PANEL FLUSH MOUNTED TO SUPPORT POSTS ON FRONT, TOP, AND BACK. ALL VISIBLE CONNECTIONS SHALL BE FULL WELDED AND GROUND FLUSH AND SMOOTH.

PRESSURE-SENSITIVE VINYL GRAPHICS LETTERING STYLE AND COPY TO BE APPROVED BY ENGINEER.

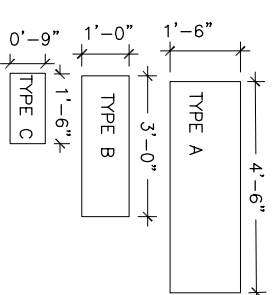
2" SQUARE ALUMINUM CHANNEL POSTS

FINISH GRADE

12"Ø CONCRETE FOOTING, 4000 PSI, SLOPE TO DRAIN

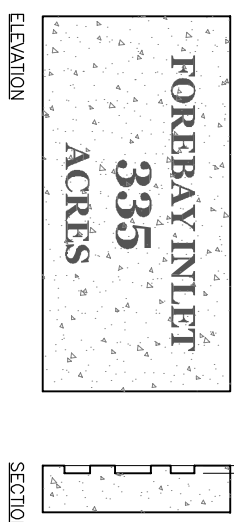
COMPACTED GRAVEL BORROW

NOTES:
1. DCR TO REVIEW AND APPROVE ENTRY SIGN PRIOR TO FABRICATION.
2. SEE L-5 FOR SIGN LOCATION.



4 PLASTIC SIGN
L-8 SCALE: 1/8"

SEE SPEC. 02980-SITE IMPROVEMENTS FOR TEXT AND GRAPHIC INFORMATION

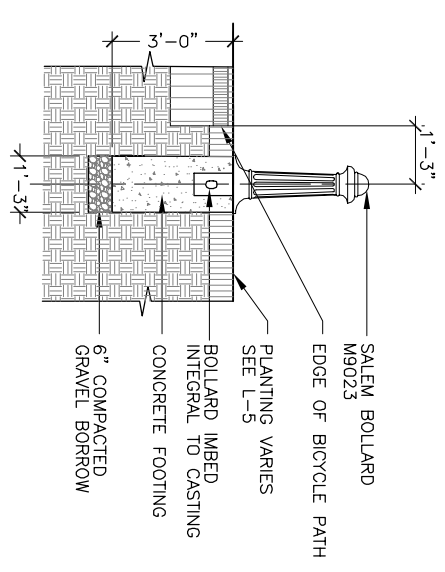


5 CONCRETE SIGN
L-8 SCALE: 1/8"

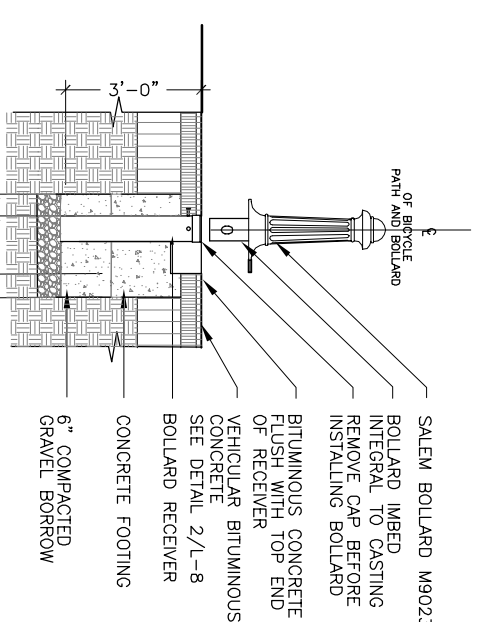
FOR SIGNAGE ATTACHMENT TO BOARDWALK RAIL, SEE DETAIL 3/L-11.

FOR SIGNAGE ATTACHMENT TO BOARDWALK MESH PANEL, SEE DETAIL 4/L-11.

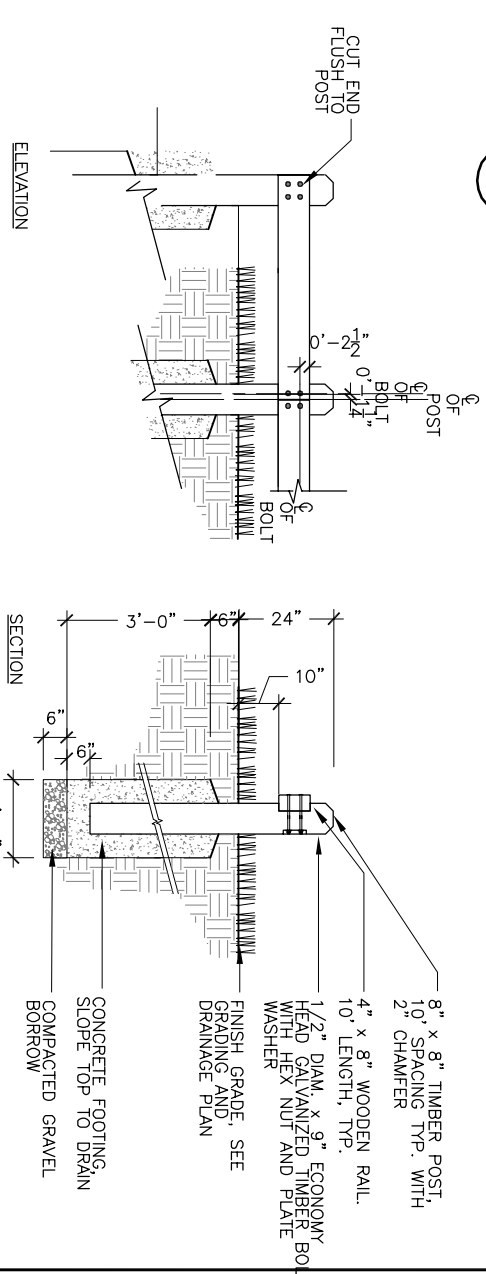
SEE SPEC. 02980-SITE IMPROVEMENTS FOR TEXT AND GRAPHIC INFORMATION



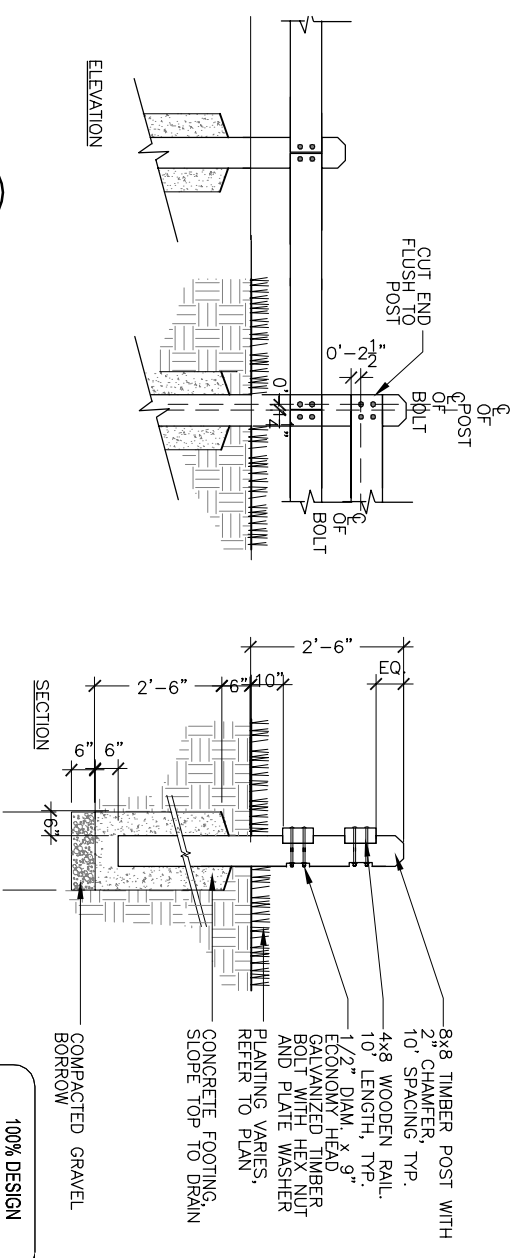
6 ALUMINUM BOLLARD
L-8 SCALE: 1/8"



7 REMOVABLE ALUMINUM BOLLARD
L-8 SCALE: 1/8"



8 SINGLE TIMBER GUIDERAIL
L-8 SCALE: 1/8"



9 DOUBLE TIMBER GUIDERAIL
L-8 SCALE: 1/8"

100% DESIGN
DRAFT SUBMITTAL
05-NOV-2004

SEA S E A Consultants Inc.
Science|Engineering|Architecture
CAMBRIDGE, MASSACHUSETTS ROXY HILL, CONNECTICUT
CONCORD, NEW HAMPSHIRE

MWH BOSTON
MASSACHUSETTS

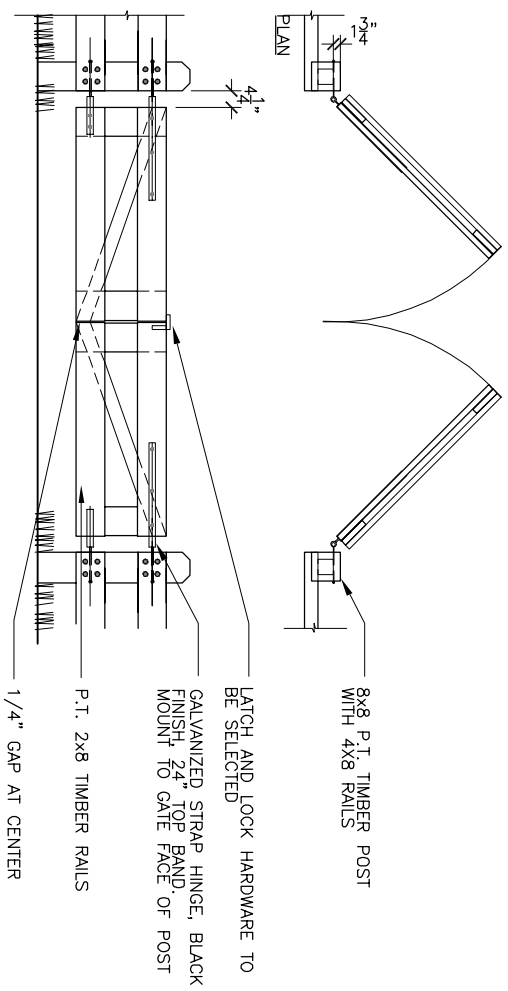
THE BIOENGINEERING GROUP, INC.
18 Commercial St.
Salem, MA 01970
978-746-0096 (PA)
978-746-0097 (FAX)
www.thebioengineering.com

| Scale | AS NOTED |
|-------------|----------|
| Date | 11.05.04 |
| Job No. | CAM |
| Designed by | KJG |
| Drawn by | KJG |
| Checked by | |
| Approved by | |

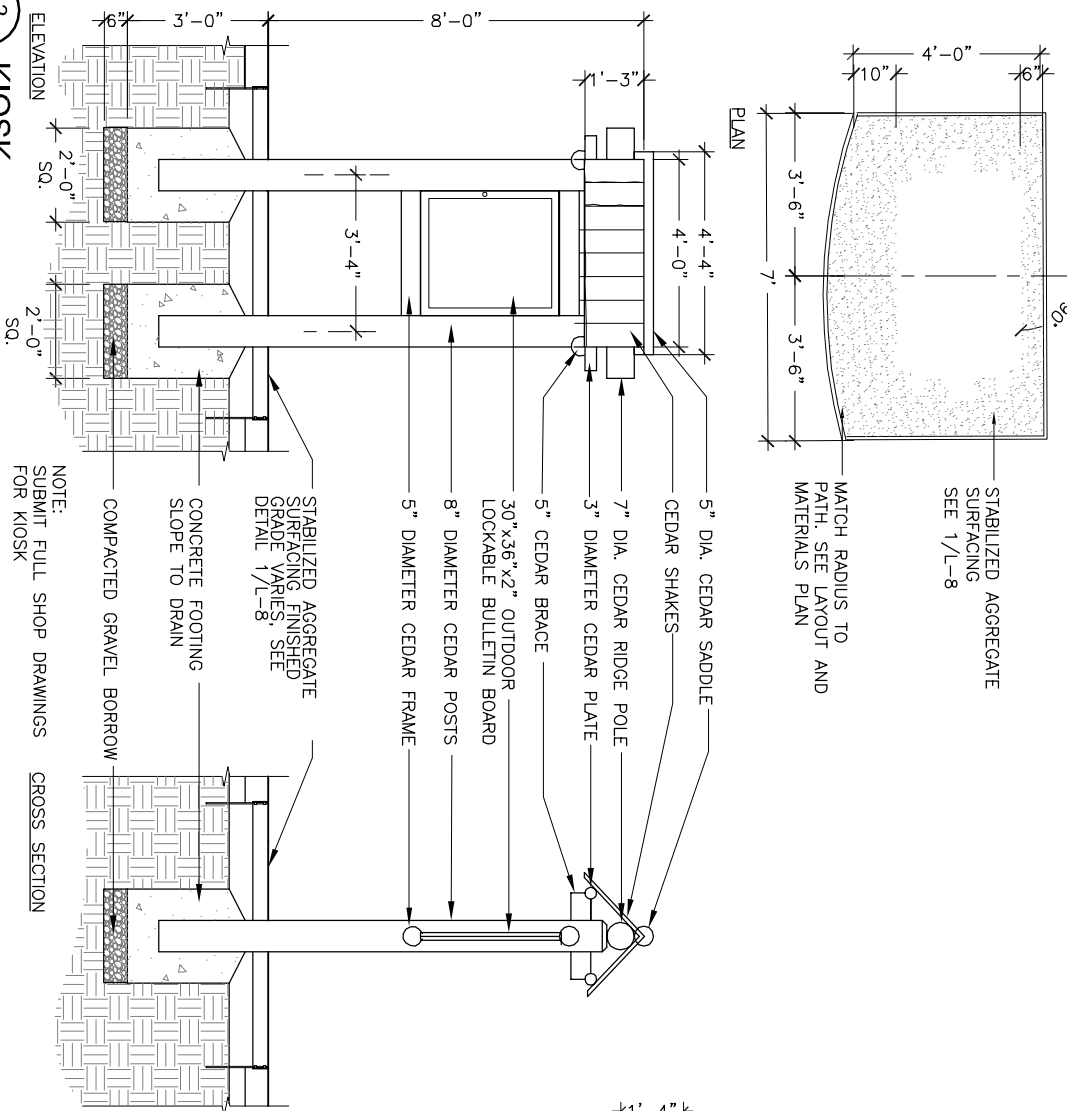
THE WORKS
CAMBRIDGE
DESIGNER OF RECORD

CITY OF CAMBRIDGE, MASSACHUSETTS
CAMBRIDGEPARK DRIVE DRAINAGE IMPROVEMENTS
CONTRACT NO. 12
LAYOUT AND MATERIAL DETAILS

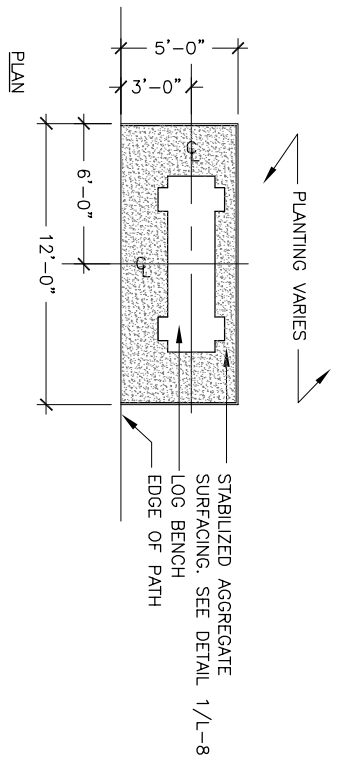
Sheet No. **L-8**
File No.



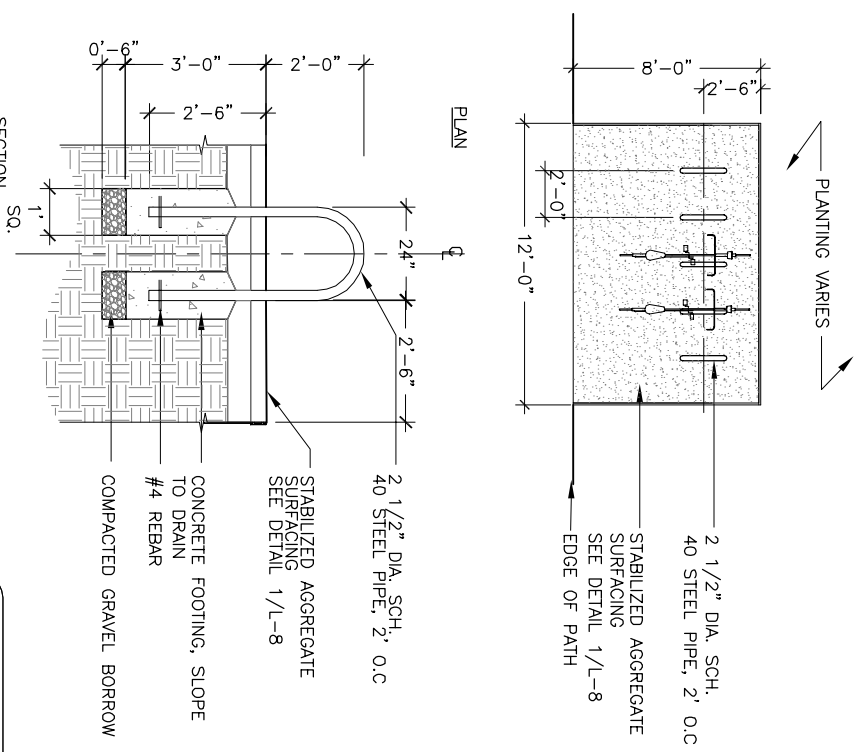
1
L-9
TIMBER GATE
SCALE: 1/8" = 1'-0"



2
L-9
KIOSK
SCALE: 1/8" = 1'-0"



3
L-9
LOG BENCH
SCALE: 1/8" = 1'-0"



4
L-9
BIKE RACK
SCALE: 1/8" = 1'-0"

SEA S E A Consultants Inc.
Science/Engineering/Architecture
CAMBRIDGE, MASSACHUSETTS ROOKY HILL, CONNECTICUT
CONCORD, NEW HAMPSHIRE

MWH MASSACHUSETTS BOSTON

THE BIOENGINEERING GROUP, INC.
18 Commercial St.
Salem, MA 01970
978 746-0096 (PA)
www.thebioengineering.com

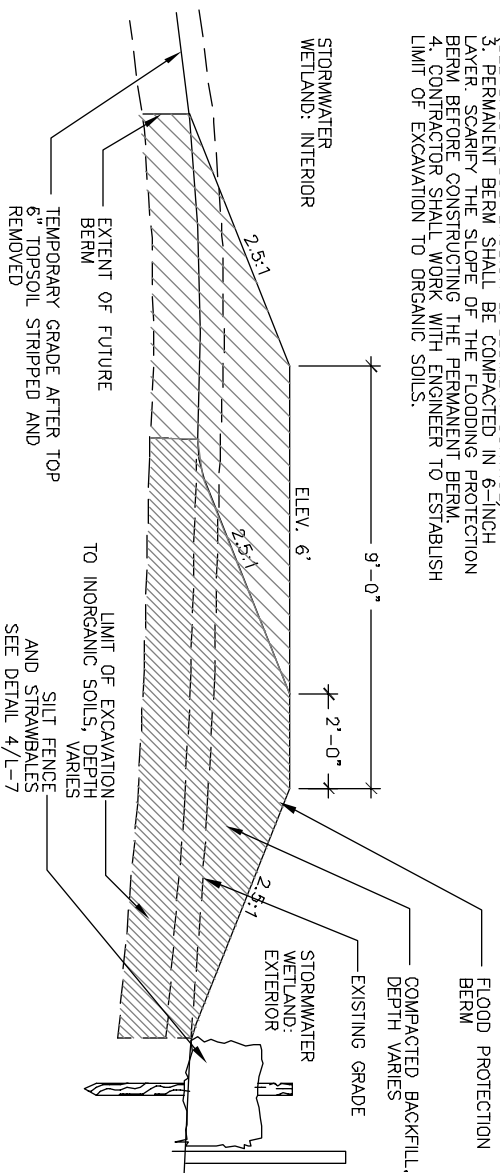
| AS NOTED | NO. | DESCRIPTION | DATE |
|-------------|----------|-------------|------|
| Scale | 11.05.04 | | |
| Date | CAM | | |
| Job No. | KIG | | |
| Designed by | KIG | | |
| Drawn by | | | |
| Checked by | | | |
| Approved by | | | |

THE WORKS CAMBRIDGE
DESIGN PARTNERSHIP
100 PARK STREET, 5TH FLOOR
CAMBRIDGE, MA 02142

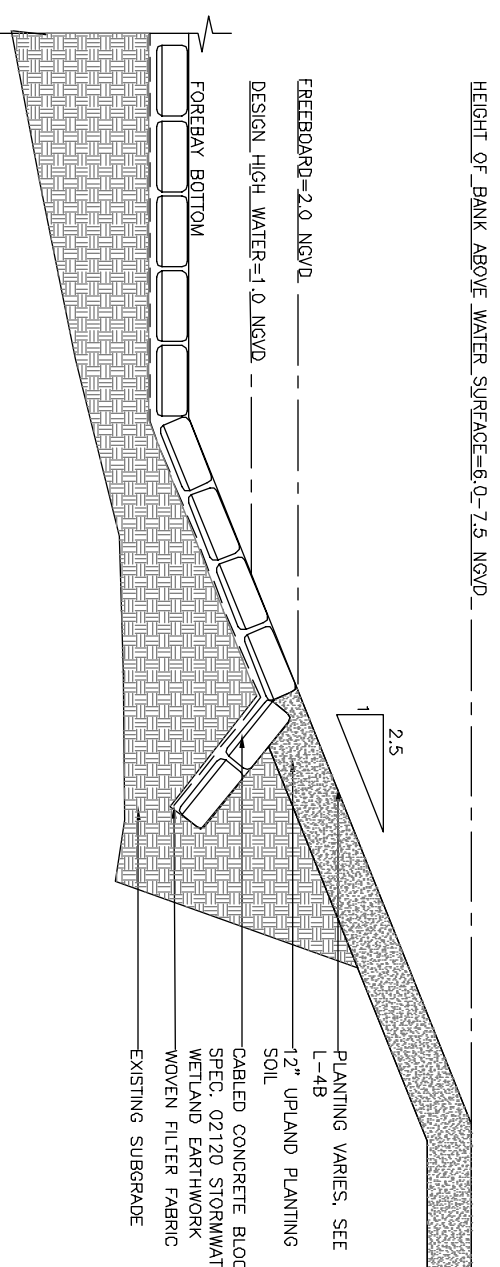
CITY OF CAMBRIDGE, MASSACHUSETTS
CAMBRIDGEPARK DRIVE DRAINAGE IMPROVEMENTS
CONTRACT NO. 12
LAYOUT AND MATERIAL DETAILS

Sheet No. **L-9**
100% DESIGN
DRAFT SUBMITTAL
05-NOV-2004

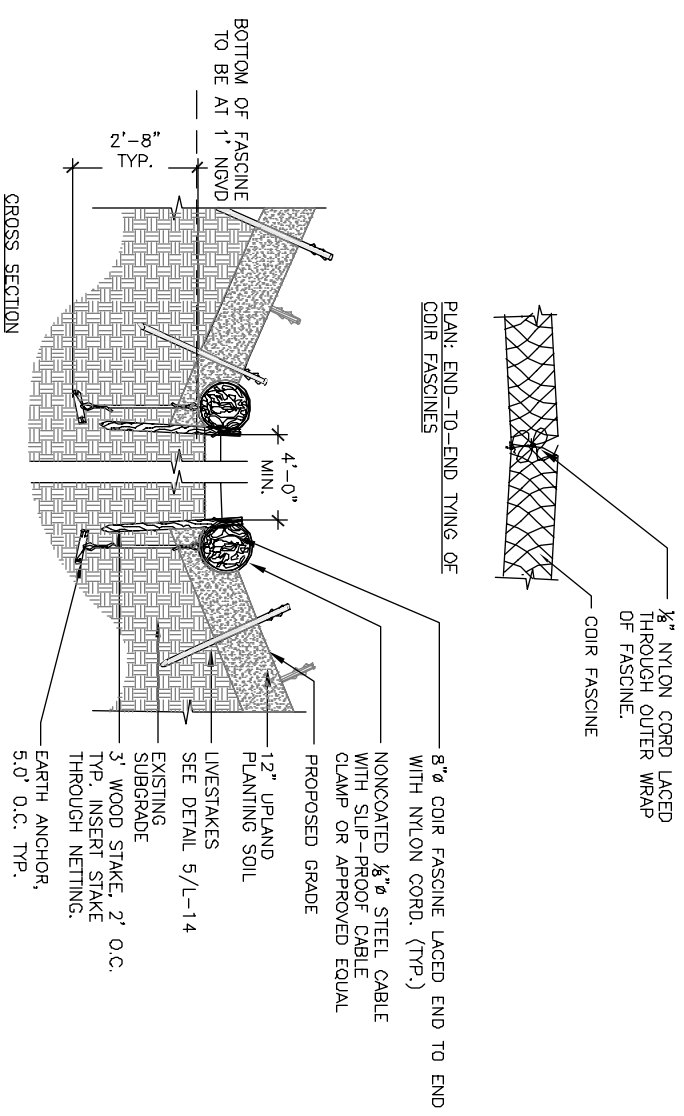
- NOTES:
1. FLOODING PROTECTION BERM SHALL BE COMPACTED IN 6-INCH LAYERS
 2. BERM SHOULD BE SEEDED WITH COVER CROP SEED MIX (SEE SPEC 01568-EROSION & SEDIMENT CONTROL)
 3. PERMANENT BERM SHALL BE COMPACTED IN 6-INCH LAYER. SCARIFY THE SLOPE OF THE FLOODING PROTECTION BERM BEFORE CONSTRUCTING THE PERMANENT BERM.
 4. CONTRACTOR SHALL WORK WITH ENGINEER TO ESTABLISH LIMIT OF EXCAVATION TO ORGANIC SOILS.



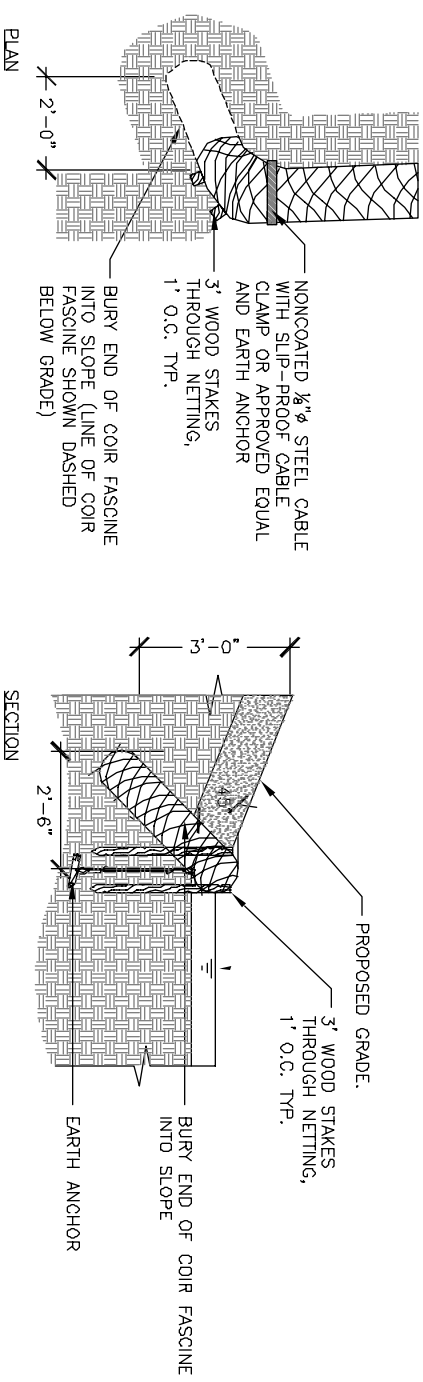
1 FLOOD PROTECTION BERM
SCALE: NTS



2 CABLED CONCRETE BLOCK
SCALE: NTS

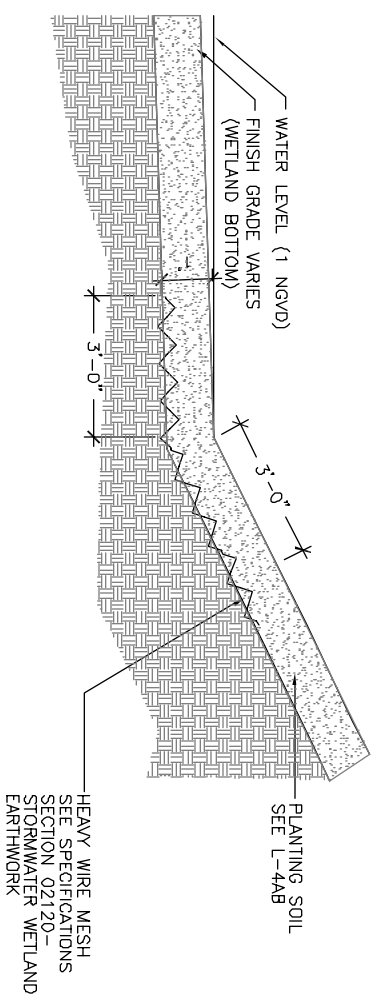


3 COIR FASCINE
SCALE: NTS

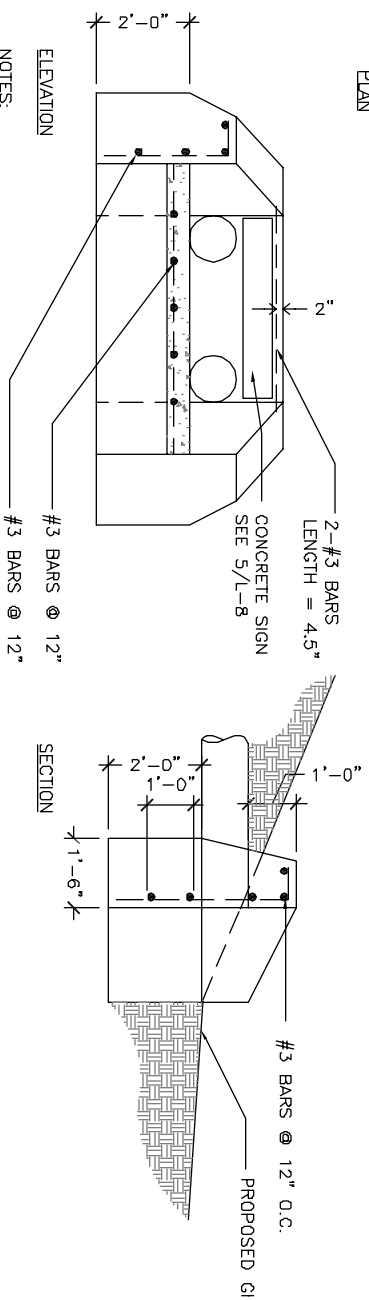
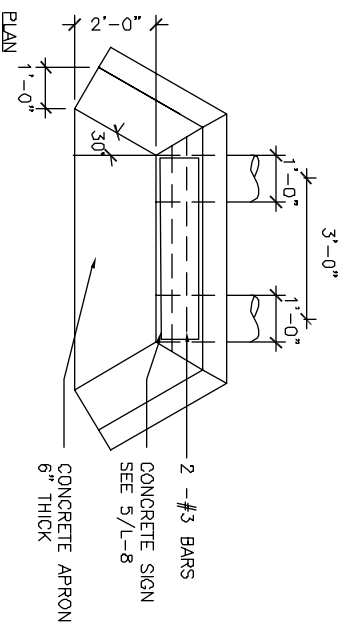


4 COIR END TREATMENT
SCALE: NTS

| Scale | AS NOTED |
|-------------|----------|
| Date | 11/05/04 |
| Job No. | CAW |
| Designed by | KJG |
| Drawn by | KJG |
| Checked by | |
| Approved by | |

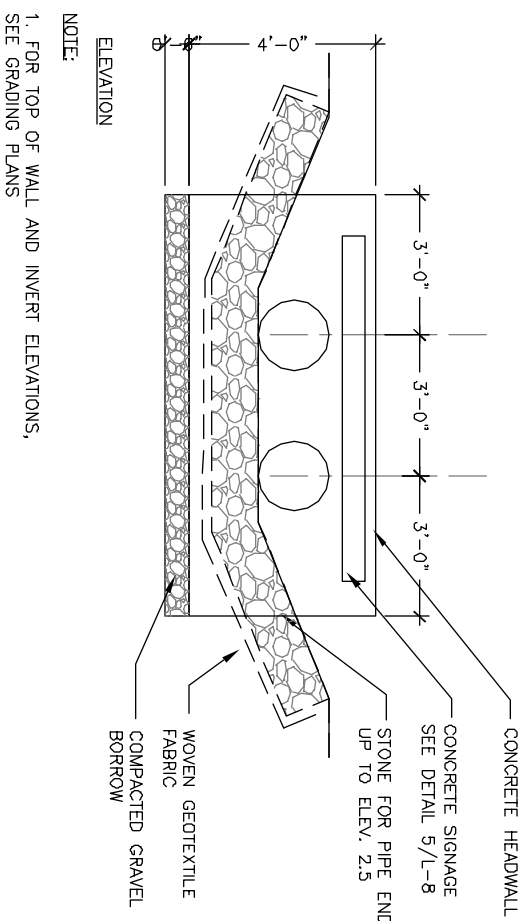


1 RODENT CONTROL
SCALE: NTS
L-13



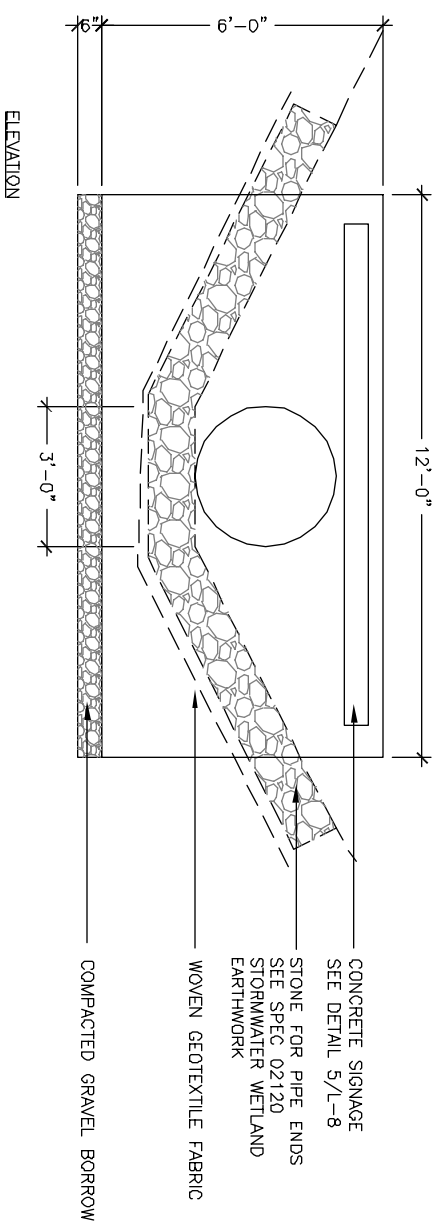
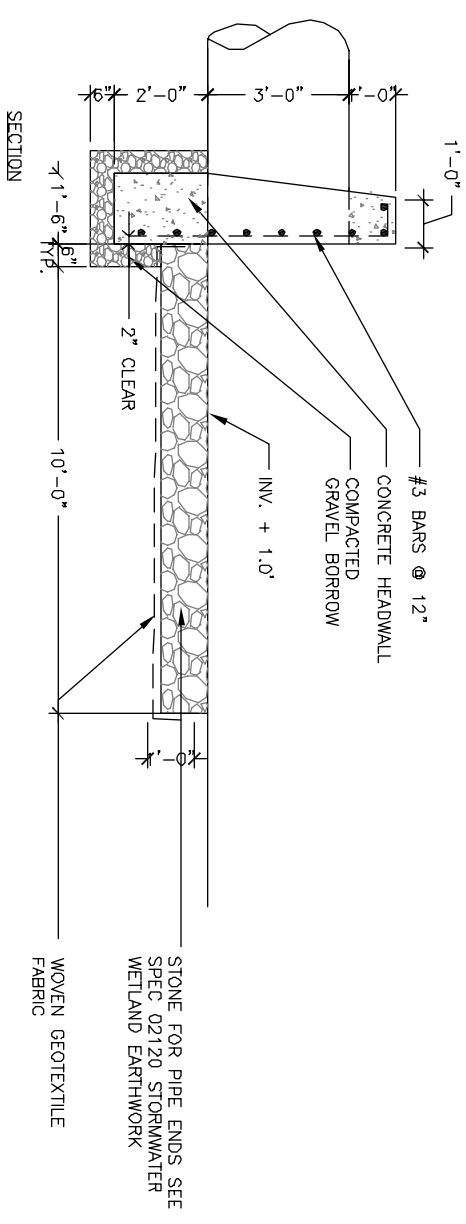
- NOTES:
1. ALL BARS #3 @ 12" MIN, 2" CLEAR OF OUTSIDE FACE OR AS SHOWN
 2. SEE GRADING PLANS FOR TOP OF WALL AND INVERT ELEVATIONS.

2 CROSS BERM INLET
SCALE: NTS
L-13



- NOTE:
1. FOR TOP OF WALL AND INVERT ELEVATIONS, SEE GRADING PLANS

3 CROSS BERM OUTLET
SCALE: NTS
L-13



4 WETLAND OUTLET
SCALE: NTS
L-13

| Scale | AS NOTED |
|-------------|-----------|
| Date | 11/05/04 |
| Job No. | CAW |
| Designed by | KJG |
| Drawn by | KJG |
| Checked by | No. |
| Approved by | REVISIONS |

THE WORKS
CAMBRIDGE OFFICE
100 STATE STREET
CAMBRIDGE, MA 02142

CITY OF CAMBRIDGE, MASSACHUSETTS
CAMBRIDGE PARK DRIVE DRAINAGE IMPROVEMENTS
CONTRACT NO. 12
GRADING AND DRAINAGE DETAILS

100% DESIGN
DRAFT SUBMITTAL
05-NOV-2004

L-13

SEA Consultants Inc.
Schwartz Engineering/Architecture
CAMBRIDGE, MASSACHUSETTS
CONCORD, NEW HAMPSHIRE
ROCKY HILL, CONNECTICUT

MWH
BOSTON
MASSACHUSETTS

THE BIOENGINEERING GROUP, INC.
18 Commercial St.
Salem, MA 01970
978.740.9095 (PH)
978.740.9097 (FAX)
www.bioengineering.com

| Scale | AS NOTED |
|-------------|-----------|
| Date | 11/05/04 |
| Job No. | CAW |
| Designed by | KJG |
| Drawn by | KJG |
| Checked by | No. |
| Approved by | REVISIONS |

THE WORKS
CAMBRIDGE OFFICE
100 STATE STREET
CAMBRIDGE, MA 02142

CITY OF CAMBRIDGE, MASSACHUSETTS
CAMBRIDGE PARK DRIVE DRAINAGE IMPROVEMENTS
CONTRACT NO. 12
GRADING AND DRAINAGE DETAILS

100% DESIGN
DRAFT SUBMITTAL
05-NOV-2004

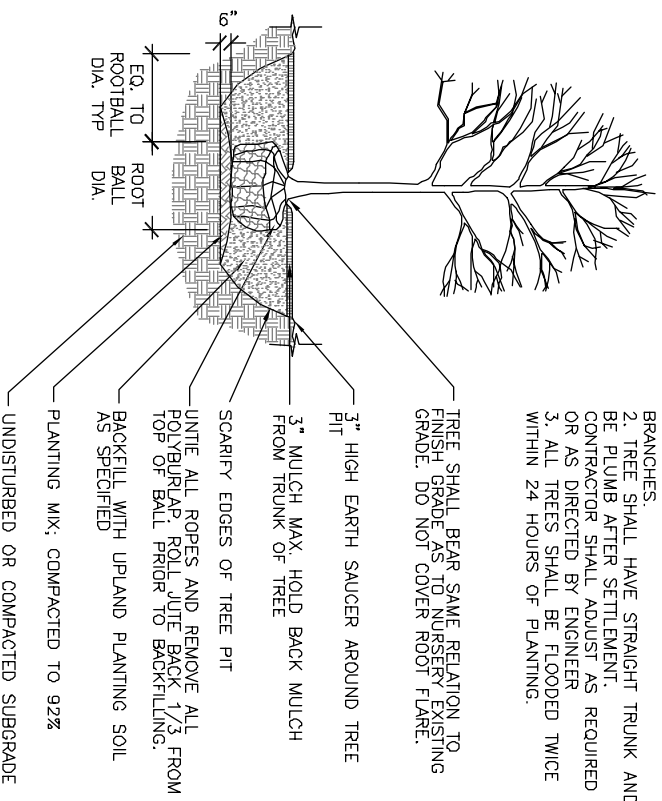
L-13

SEA Consultants Inc.
Schwartz Engineering/Architecture
CAMBRIDGE, MASSACHUSETTS
CONCORD, NEW HAMPSHIRE
ROCKY HILL, CONNECTICUT

MWH
BOSTON
MASSACHUSETTS

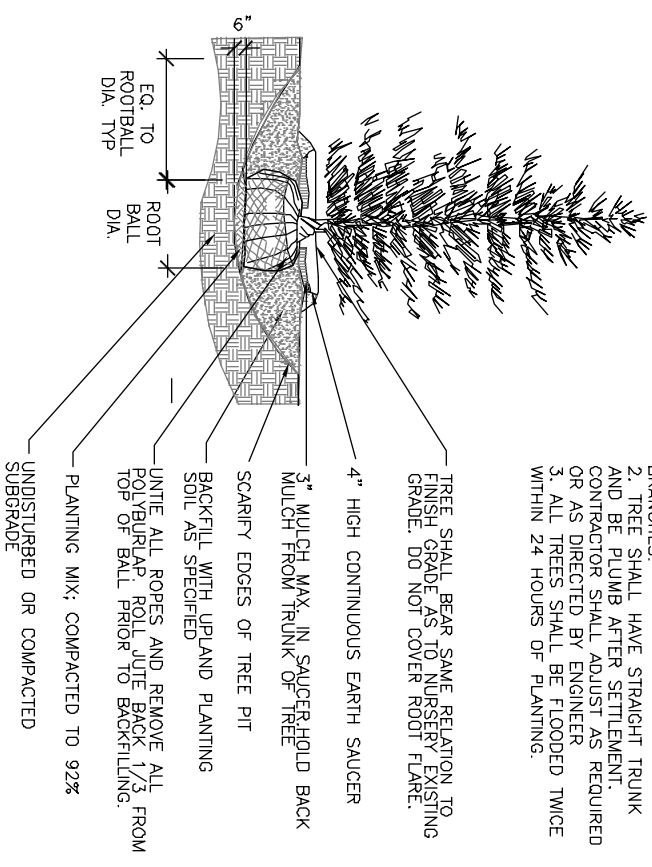
THE BIOENGINEERING GROUP, INC.
18 Commercial St.
Salem, MA 01970
978.740.9095 (PH)
978.740.9097 (FAX)
www.bioengineering.com

- NOTES:
1. CLEANLY PRUNE ALL DAMAGED BRANCHES.
 2. TREE SHALL HAVE STRAIGHT TRUNK AND BE PLUMB AFTER SETTLEMENT. CONTRACTOR SHALL ADJUST AS REQUIRED OR AS DIRECTED BY ENGINEER
 3. ALL TREES SHALL BE FLOODED TWICE WITHIN 24 HOURS OF PLANTING.

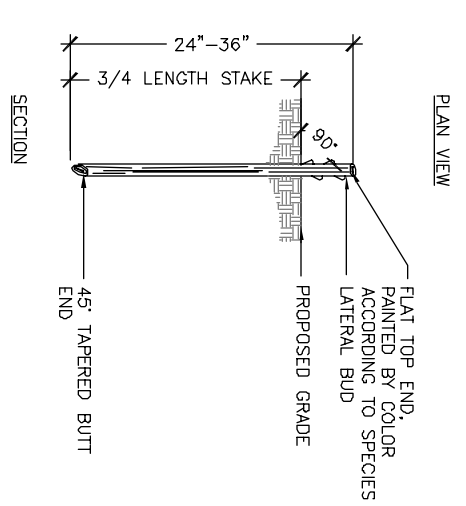
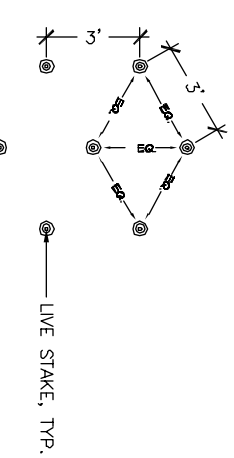


1 DECIDUOUS TREE PLANTING
SCALE: NTS
L-14

- NOTES:
1. CLEANLY PRUNE ALL DAMAGED BRANCHES.
 2. TREE SHALL HAVE STRAIGHT TRUNK AND BE PLUMB AFTER SETTLEMENT. CONTRACTOR SHALL ADJUST AS REQUIRED OR AS DIRECTED BY ENGINEER
 3. ALL TREES SHALL BE FLOODED TWICE WITHIN 24 HOURS OF PLANTING.

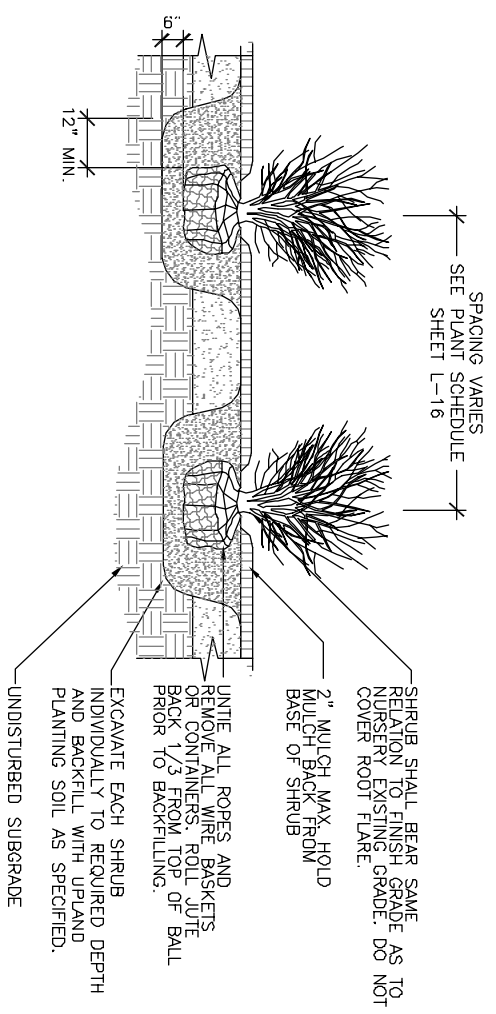


3 EVERGREEN
SCALE: NTS
L-14



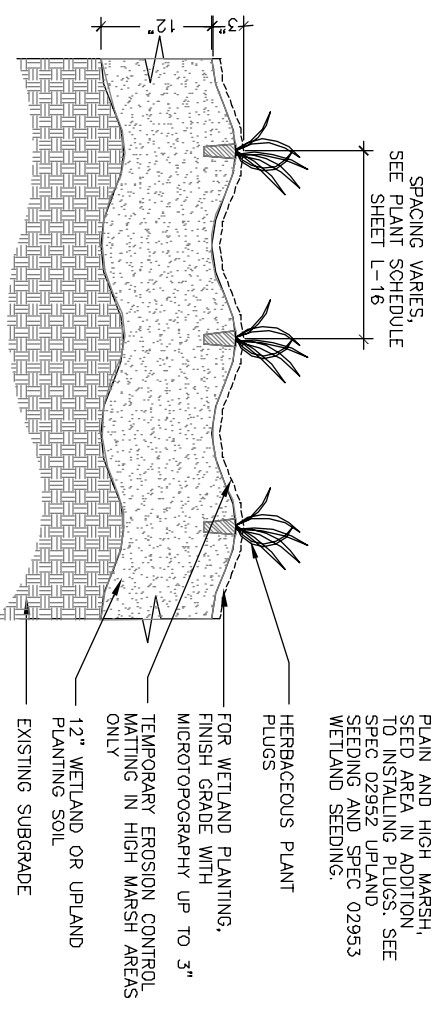
5 LIVESTAKES
SCALE: NTS
L-14

SPACING VARIES
SEE PLANT SCHEDULE



2 SHRUB PLANTING
SCALE: NTS
L-14

SPACING VARIES,
SEE PLANT SCHEDULE
SEE SHEET L-16



4 HERBACEOUS PLANT PLUGS
SCALE: NTS
L-14

NOTE:
1. FOR BROADLEAF FLOOD PLAIN AND HIGH MARSH, SEED AREA IN ADDITION TO INSTALLING PLUGS. SEE SPEC 02952 UPLAND SEEDING AND SPEC 02953 WETLAND SEEDING.

100% DESIGN
DRAFT SUBMITTAL
05-NOV-2004

SEA S E A Consultants Inc.
Schwartz Engineering/Architecture
CAMBRIDGE, MASSACHUSETTS
CONCORD, NEW HAMPSHIRE
ROCKY HILL, CONNECTICUT

MWH
MASSACHUSETTS
BOSTON

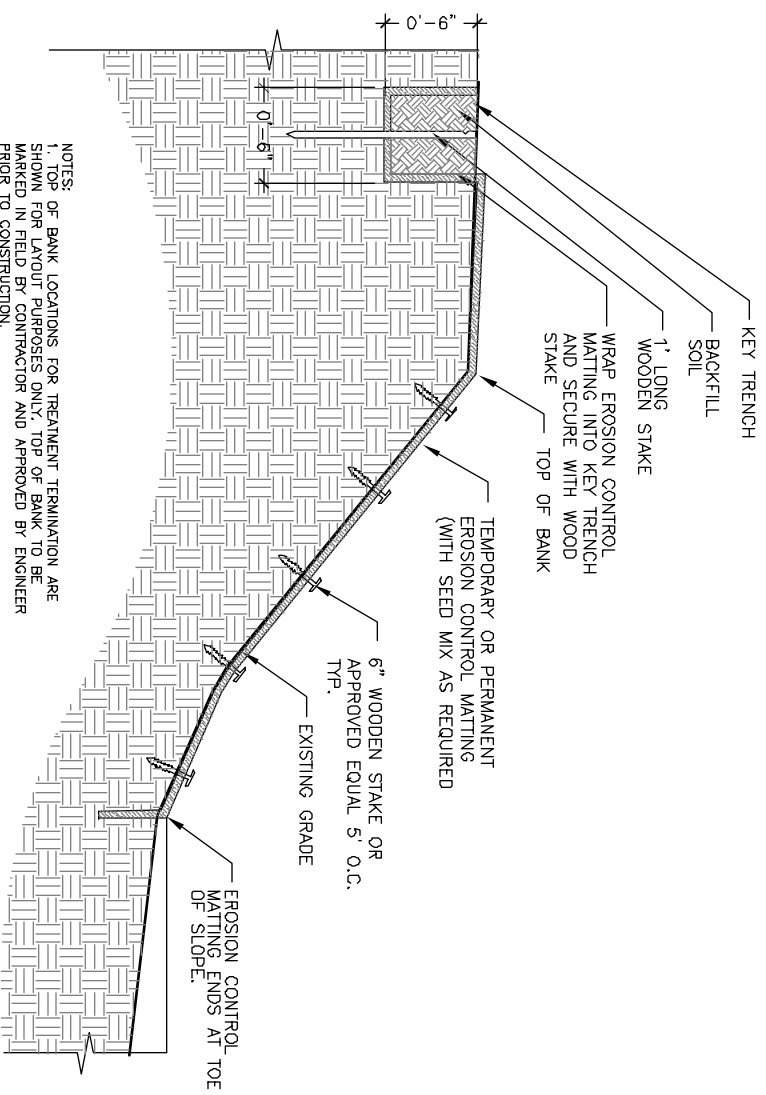
THE BIOENGINEERING GROUP, INC.
18 Commercial St.
Salem, MA 01970
978.740.9106 (ph)
978.740.4097 (fax)
www.bioengineering.com

| AS NOTED | REVISIONS |
|------------------|-----------|
| Date: 11/05/04 | |
| Job No. CAM | |
| Designed by: KJG | |
| Drawn by: KJG | |
| Checked by: | |
| Approved by: | |

THE WORKS
CAMBRIDGE OFFICE
100 STATE STREET
CAMBRIDGE, MA 02142

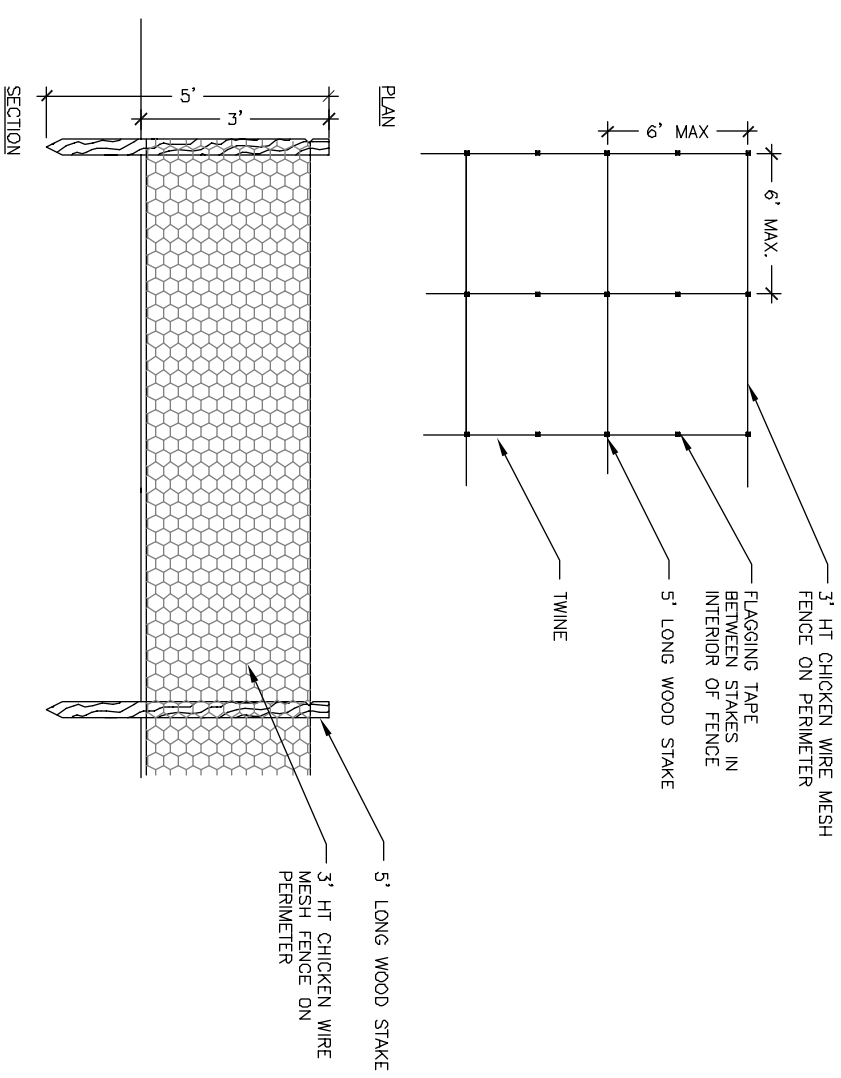
CITY OF CAMBRIDGE, MASSACHUSETTS
CAMBRIDGE PARK DRIVE DRAINAGE IMPROVEMENTS
CONTRACT NO. 12
PLANTING DETAILS

Sheet No. **L-14**
File No.



NOTES:
 1. TOP OF BANK LOCATIONS FOR TREATMENT TERMINATION ARE SHOWN FOR LAYOUT PURPOSES ONLY. TOP OF BANK TO BE MARKED IN FIELD BY CONTRACTOR AND APPROVED BY ENGINEER PRIOR TO CONSTRUCTION.
 2. SEE SHEET L-3B FOR LOCATION OF PERMANENT E.C. MATTING.
 3. SEE SPEC 01568, EROSION AND SEDIMENT CONTROL FOR TEMPORARY E.C.

1
 L-15
 SCALE: NTS
EROSION CONTROL MATTING



2
 L-15
 SCALE: NTS
GOOSE DETERRENT FENCE

NOTES:
 1. TOP OF BANK LOCATIONS FOR TREATMENT TERMINATION ARE SHOWN FOR LAYOUT PURPOSES ONLY. TOP OF BANK TO BE MARKED IN FIELD BY CONTRACTOR AND APPROVED BY ENGINEER PRIOR TO CONSTRUCTION.
 2. SEE SHEET L-3B FOR LOCATION OF PERMANENT E.C. MATTING.
 3. SEE SPEC 01568, EROSION AND SEDIMENT CONTROL FOR TEMPORARY E.C.



| | |
|-------------|-----------|
| Scale | A SNOTED |
| Date | 11.05.04 |
| Job No. | CAM |
| Designed by | KJG |
| Drawn by | KJG |
| Checked by | No. |
| Approved by | REVISIONS |



CITY OF CAMBRIDGE, MASSACHUSETTS
 CAMBRIDGE PARK DRIVE DRAINAGE IMPROVEMENTS
 CONTRACT NO. 12
 PLANTING DETAILS

100% DESIGN
 DRAFT SUBMITTAL
 05-NOV-2004

Sheet No.
L-15
 File No.

| ENTRY WAY | TOTAL PLANTING AREA | ESTIMATED NUMBER | SYMBOL | SCIENTIFIC NAME | COMMON NAME | SIZE | SPACING | COMMENTS |
|--------------------|---------------------|------------------|--------|-----------------|-------------|--------|----------|----------|
| TALL TURF SEED MIX | 510 sf | 9 | Qu | Quercus rubra | Red Oak | 3" cal | 25' O.C. | |
| SEE SHEET L-5 | | | | | | | | |

| HABITAT TYPE/ SEED MIX | TOTAL PLANTING AREA | ESTIMATED NUMBER | SYMBOL | SCIENTIFIC NAME | COMMON NAME | SIZE | SPACING | COMMENTS |
|------------------------|---------------------|------------------|--------|-------------------------|--------------------|---------|---------|----------------------|
| TALL TURF SEED MIX | 5000 sf | 1 | Qa | Quercus alba | White Oak | 4" cal. | SEE L-6 | |
| | | 2 | Ny | Nyssa sylvatica | Tupelo | 2" cal. | SEE L-6 | |
| | | 10 | Bn | Betula nigra | River Birch | 10" ht | SEE L-6 | B&B Clump, 3-5 Stems |
| SEE SHEET L-5 | | 500 | Va | Vaccinium angustifolium | Low Bush Blueberry | | 2' O.C. | |

| HABITAT TYPE/ SEED MIX | TOTAL PLANTING AREA | ESTIMATED NUMBER | SYMBOL | SCIENTIFIC NAME | COMMON NAME | SIZE | SPACING | COMMENTS | |
|----------------------------|---------------------|------------------|--------|-----------------|-------------------------|-------------------|--------------|---|--|
| RIPARIAN WOODLAND SEED MIX | 29,180 sf | 6-8' | 8-14' | | | | | | |
| | | 6 | 27 | Ac | Amenochier canadensis | 8' ht | 10' O.C. min | B&B Clump, 3-5 Stems | |
| | | 6 | 27 | Bp | Betula populifolia | 8' ht | 10' O.C. min | B&B Clump, 3-5 Stems | |
| | | 7 | 40 | Ps | Pinus strobus | 8' ht | 10' O.C. min | B&B | |
| | | 7 | 40 | Qr | Quercus rubrum | 2" cal | 10' O.C. min | B&B | |
| | | 23 | 93 | Gb | Goylussacia beccata | | 3' O.C. min | Plant in masses of 5-15 plants of the same species. | |
| | | 49 | 247 | Mp | Myrica pennsylvanica | | 3' O.C. min | | |
| | | 44 | 494 | Va | Vaccinium angustifolium | Lowbush Blueberry | | 3' O.C. min | |

| HABITAT TYPE/ SEED MIX | TOTAL PLANTING AREA | ESTIMATED NUMBER | SYMBOL | SCIENTIFIC NAME | COMMON NAME | SIZE | SPACING | COMMENTS |
|----------------------------|---------------------|------------------|--------|-----------------|------------------------|--------------------|--------------|--|
| RIPARIAN WOODLAND SEED MIX | 39,410 sf | 1-3' | 3-6' | | | | | |
| | | 31 | Ar | Acet. rubrum | Red maple | 8" ht | 10' O.C. min | Plant in groups of 3, 5 or 7 plants of the same species. |
| | | 5 | Ar | Acet. rubrum | Red maple | 2" cal | 10' O.C. min | B&B Clump, 3-5 Stems |
| | | 22 | 0 | Au | Alnus rugosa | 2" cal | 10' O.C. min | Alternate with clump variety B&B Clump, 3-5 Stems |
| | | 7 | 20 | Fp | Fraxinus pennsylvanica | 2" cal | 10' O.C. min | B&B |
| | | 6 | 19 | Ns | Nyssa sylvatica | 2" cal | 10' O.C. min | B&B |
| | | 23 | 0 | Sn | Salix nigra | 2" cal | 10' O.C. min | B&B |
| | | 6 | 22 | Ua | Ulmus americana | 2" cal | 10' O.C. min | B&B |
| | | 4 | 17 | Qb | Quercus bicolor | 2" cal | 10' O.C. min | B&B |
| | | 134 | 301 | le | Ilex verticillata | | 3' O.C. min | Common winterberry |
| | | 134 | 302 | Vd | Viburnum dentatum | Arrowwood viburnum | 3' O.C. min | |
| | | 134 | 303 | Vi | Viburnum trilobum | Common viburnum | 3' O.C. min | |

| HABITAT TYPE/ SEED MIX | TOTAL PLANTING AREA | ESTIMATED NUMBER | SYMBOL | SCIENTIFIC NAME | COMMON NAME | SIZE | SPACING | COMMENTS |
|------------------------|---------------------|------------------|--------|---------------------------|--------------------|------------|-------------|---|
| SCRUBSHRUB TYPE 1 | 8,530 sf | 1-6' | | | | | | |
| | | 364 | Co | Cephalanthus occidentalis | Butterbush | Livestakes | 3' O.C. | Dormant. Installation Only |
| | | 364 | Ca | Cornus amomum | Silky Dogwood | Livestakes | 3' O.C. | Dormant Installation Only |
| | | 364 | Sd | Salix discolor | Pussy Willow | Livestakes | 3' O.C. | Dormant Installation Only |
| SCRUBSHRUB TYPE 2 | 14,700 sf | 1-6' | | | | | | |
| | | 118 | An | Aonia melanocarpa | Black Chokeberry | #2 Cont. | 3' O.C. min | Plant in masses of 3-19 plants of the same species. |
| | | 118 | Ca | Clethra alnifolia | Sweet Pepperbush | #2 Cont. | 3' O.C. min | |
| | | 118 | SI | Spiraea latifolia | Meadowsweet | #2 Cont. | 3' O.C. min | |
| | | 118 | Vc | Vaccinium corymbosum | Highbush blueberry | #2 Cont. | 3' O.C. min | |

NOTE:
ALL ELEVATIONS REFER TO NATIONAL GEODETIC VERTICAL DATUM, (NOVD)

| HABITAT TYPE/ SEED MIX | TOTAL PLANTING AREA | ESTIMATED NUMBER | SYMBOL | SCIENTIFIC NAME | COMMON NAME | SIZE | SPACING | COMMENTS |
|------------------------|---------------------|-------------------------|--------|------------------------|----------------------|------------|----------|--|
| BROADLEAF FLOODPLAIN | 4,270 sf | 1-6' | | | | | | |
| | | 124 | Ai | Asclepias incarnata | Swamp Milkweed | 2" plug | 2' O.C. | Plant in masses of 5-15 plants of the same species, typ. |
| | | 248 | An | Aster novae angliae | New England Aster | 2" plug | 2' O.C. | |
| | | 124 | Ap | Aster purpureus | Swamp Aster | 2" plug | 2' O.C. | |
| | | 124 | Em | Eupatorium maculatum | Spotted Joe Pye Weed | 2" plug | 2' O.C. | |
| | | 62 | Ep | Eupatorium perfoliatum | Bonset | 2" plug | 2' O.C. | |
| | | 62 | Oc | Osmunda cinnamomea | Cinnamon Fern | 2" plug | 2' O.C. | |
| | | 62 | Or | Osmunda regalis | Royal Fern | 2" plug | 2' O.C. | |
| | | 62 | Os | Onoclea sensibilis | Sensitive Fern | 2" plug | 2' O.C. | |
| | | 248 | Sc | Solidago canadensis | Canada Goldenrod | 2" plug | 2' O.C. | |
| | | 124 | Vh | Verbena hastata | Blue Vervain | 2" plug | 2' O.C. | |
| PLANT TOTAL | 1240 | | | | | | | |
| HIGH MARSH | 40,610 sf | ELEVATION: 0.5-1.0' | | | | | | Plant in masses of 5-15 plants of the same species, typ. |
| | | 589 | Cp | Caltha palustris | Marsh Marigold | 2" plug | 2' O.C. | |
| | | 589 | Cs | Carex stipida | Common Fox Sedge | 2" plug | 2' O.C. | |
| | | 1178 | Cl | Carex stricta | Tussock Sedge | 2" plug | 2' O.C. | |
| | | 589 | Cv | Carex vulpinoidea | Foxtail Sedge | 2" plug | 2' O.C. | |
| | | 589 | Eh | Elymus hystrix | Battlebrush Grass | 2" plug | 2' O.C. | |
| | | 589 | Er | Elymus riparius | Riverbank Wild Rye | 2" plug | 2' O.C. | |
| | | 589 | Ev | Elymus virginicus | Virginia Wild Rye | 2" plug | 2' O.C. | |
| | | 1413 | Hm | Hibiscus moscheutos | Marsh Hibiscus | 2" plug | 2' O.C. | |
| | | 1413 | Jc | Juncus canadensis | Canada Rush | 2" plug | 2' O.C. | |
| | | 1413 | Je | Juncus effusus | Soft Rush | 2" plug | 2' O.C. | |
| | | 1413 | Lo | Laersia oryzoides | Rice cut grass | 2" plug | 2' O.C. | |
| | | 1413 | Sy | Scirpus cyperinus | Wool Grass | 2" plug | 2' O.C. | |
| PLANT TOTAL | 11,777 | | | | | | | |
| EMERGENT MARSH | 38,410 sf | ELEVATION: 0.5-4' | | | | | | Plant in masses of 5-15 plants of the same species, typ. |
| | | 5,522 | Cr | Carex stricta | Tussock Sedge | 2" plug | 8" O.C. | |
| | | 5,522 | Ep | Eleocharis palustris | Spike Rush | 2" plug | 8" O.C. | |
| | | 5,522 | Iv | Iris versicolor | Blue Flag Iris | 2" plug | 8" O.C. | |
| | | 5,522 | Je | Juncus effusus | Soft Rush | 2" plug | 8" O.C. | |
| | | 5,522 | Pv | Peltandra virginica | Arrow Arum | 2" plug | 8" O.C. | |
| | | 5,522 | Sa | Sporogonum americanum | Lesser Bur-reed | 2" plug | 8" O.C. | |
| | | 5,522 | St | Scirpus atrovirens | Green Bur-reed | 2" plug | 8" O.C. | |
| | | 5,522 | Sv | Scirpus validus | Soft Stem Bur-reed | 2" plug | 8" O.C. | |
| PLANT TOTAL | 44,176 | | | | | | | |
| DEEP MARSH TYPE 1 | 1,355 lf | ELEVATION: -0.5' | | | | | | Plant in single row, alternating species in groups of 10-20. |
| | | 226 | Su | Scirpus acutus | Hard Stem Bur-reed | #SP4 cont. | 18" O.C. | |
| | | 452 | Sv | Scirpus validus | Soft Stem Bur-reed | #SP4 cont. | 18" O.C. | |
| | | 226 | Sm | Sporogonum americanum | Lesser Bur-reed | #SP4 cont. | 18" O.C. | |
| PLANT TOTAL | 903 | | | | | | | |
| DEEP MARSH TYPE 2 | 13,650 sf | ELEVATION: -0.5-1.0' | | | | | | Plant in masses of 5-15 plants of the same species, typ. |
| | | 2,330 | No | Nymphaea odorata | White Water Lily | #SP4 cont. | 18" O.C. | |
| | | 2,330 | Pc | Pontederica cordata | Pickersweed | #SP4 cont. | 18" O.C. | |
| | | 2,330 | Si | Sagittaria latifolia | Northern Arrowhead | #SP4 cont. | 18" O.C. | |
| PLANT TOTAL | 6,990 | | | | | | | |

100% DESIGN
DRAFT SUBMITTAL
05-NOV-2004



| AS NOTED | |
|-------------|-------------|
| Scale | 11/16" = 1' |
| Date | 11/05/04 |
| Job No. | CAM |
| Designed by | KJG |
| Drawn by | KJG |
| Checked by | |
| Approved by | |

| No. | Description | REVISIONS | Date |
|-----|-------------|-----------|------|
| | | | |



CITY OF CAMBRIDGE, MASSACHUSETTS
CAMBRIDGE PARK DRIVE DRAINAGE IMPROVEMENTS
CONTRACT NO. 12
DETAILS: PLANTING

Sheet No. L-16
File No.