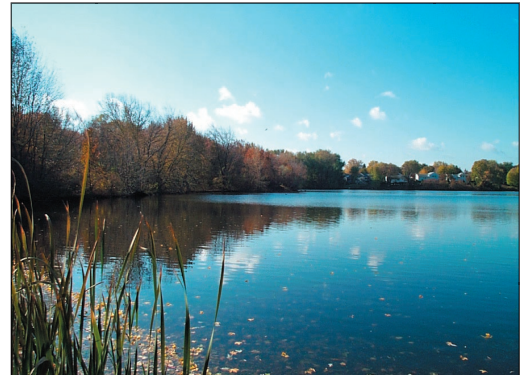


EPILOGUE



This Master Plan presents an ambitious program for watershed stewardship. Its success will depend on the continued, dedicated efforts of the MDC, concerned citizens, and local and state officials. The implementation of these recommendations would result in an ecologically and socially vibrant urban wild and greenway. This would be a new park system link strengthening Charles Eliot’s century-old vision of a continuous network of open spaces throughout the suburbs of metropolitan Boston.

“We abuse land because we see it as a commodity belonging to us. When we see land as a community to which we belong, we may begin to use it with love and respect.”

(Aldo Leopold)